

An Introduction to Adobe Photoshop

Steve Bark



Download free books at

Steve Bark

An Introduction to Adobe Photoshop

An Introduction to Adobe Photoshop
© 2012 Steve Bark & Ventus Publishing ApS
ISBN 978-87-403-0016-1

Contents

	An Introduction to Adobe Photoshop	6
1	Photoshop Panels and Tools	7
2	Basic Operations	13
3	Navigating and Zooming	21
4	Simple Global Adjustments	24
5	Layers	32
6	Simple Selections	41
7	Choosing Colours	53
8	Guides and Rulers	59
9	History	64
10	Cropping	70
11	Basic Printing	72

Please click the advert



Discover the truth at www.deloitte.ca/careers

Deloitte.

© Deloitte & Touche LLP and affiliated entities.

Download free ebooks at bookboon.com

About the Author

After leaving school in Sheffield, UK, Steve worked in the print industry for 10 years before being made redundant. He decided to return to education and completed courses in many subjects including Information Technology, Business and Finance, Sound Engineering and Music Production, Science and a BSc. in Biomedical Science.

After graduating, Steve had several jobs in various scientific fields including immunology and developmental genetics, during which time he developed a keen interest in digital imaging which progressed into an interest in creative Photography.

After his current contract had expired, he undertook a course in Photoshop Artistry at the University of Sheffield. He soon realised that he had already amassed a great deal of knowledge in this field and knew more about image editing and processing than the lecturer. The lecturer asked if Steve would take over in teaching the course as he was leaving for another position. He contacted the University and was given a position as an associate lecturer teaching Photoshop Artistry, Computer Graphics and Advanced Digital Imaging.

Steve taught at the University of Sheffield for three years and then decided to pursue a career in providing bespoke training and consultancy in Photoshop and Digital Photography. He has continued in this role for the past seven years.

Steve remains an avid consumer of knowledge and education and has completed over thirty online courses and has become an Adobe Certified Expert in Photoshop and a respected Photographer in his own right.



An Introduction to Adobe Photoshop

Foreword

When Photoshop was first introduced back in February of 1990 it caused quite a stir amongst the creative community. For the first time, designers and photographers were able to perform image editing tasks without resorting to high end equipment that cost double the amount. It started a revolution that continues to this day. Over the years there have been many other programs that perform similar functions to Photoshop. However, Adobe's image editing software has seen off all comers and after 21 years, it is still the industry standard program in its field.

Introduction

Adobe Photoshop is a massive program and it would take a volume of several thousand pages to cover every parameter of every function. In this publication I aim to provide a tour of the Photoshop user interface and cover some of the basic functions of Adobe Photoshop, in the form of a general overview. This will provide a good foundation to build on as you read the more advanced books in this series on Adobe Photoshop.

As you begin the process of learning Adobe Photoshop, you will quickly come to realise that there are often multiple way of accomplishing the same task. It is not necessary for you to learn the 5 or 6 different ways there are in Photoshop for creating a new layer. You only need to remember the one method that fits with the way you prefer to work. This may be a keyboard shortcut, right clicking, menus or icons, it's completely up to you how utilise the tools that are available to you.

1 Photoshop Panels and Tools

Photoshop is modular in its layout and it is infinitely customizable. In the default configuration, the panels are located on the right hand side, the tools are on the left and the options bar which displays the most useful parameters for a selected tool is across the top of the work area. There is also a standard menu bar at the very top of the application.

Workspaces

All of the program elements, with the exception of the menu bar, can be dragged around and docked with other panels to create your own custom work area called a workspace. There are a number of pre-set workspaces that can be selected from the right hand side of the menu bar, the default workspace is called “Essentials” and can be recalled at any time by clicking on the button. This is very useful because beginners will often accidentally close or collapse panels and can’t remember how to restore them.

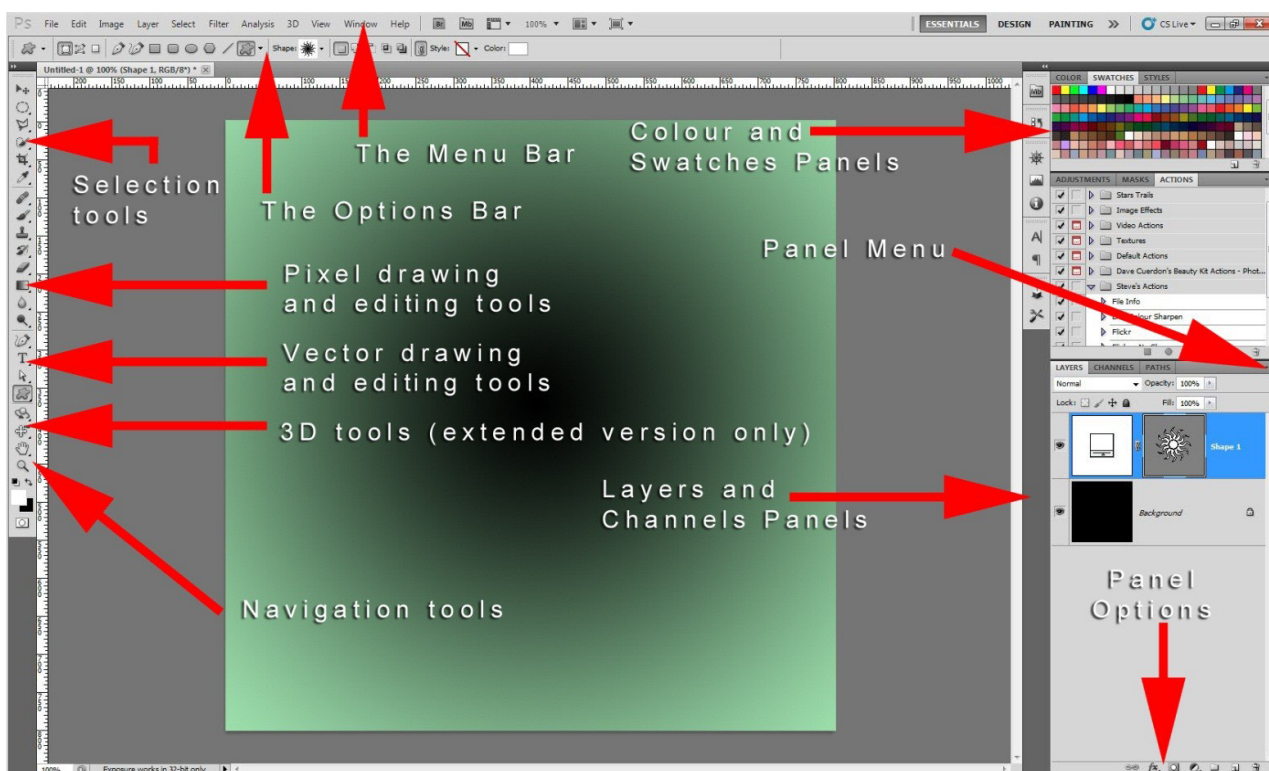


Fig 1.1 the default Photoshop workspace layout

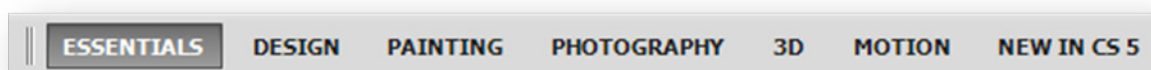


Fig 1.2 a close up of the workspaces available from the top right corner of the menu bar

If you cannot see all of the workspace options shown in fig 1.2, they can be accessed by clicking on the >> icon. Alternatively, they can be accessed from the Window menu > Workspace.

Each open panel has its own fly-out menu that contains commonly used functions. The menu can be accessed by clicking on the  icon at the top right of the respective panel

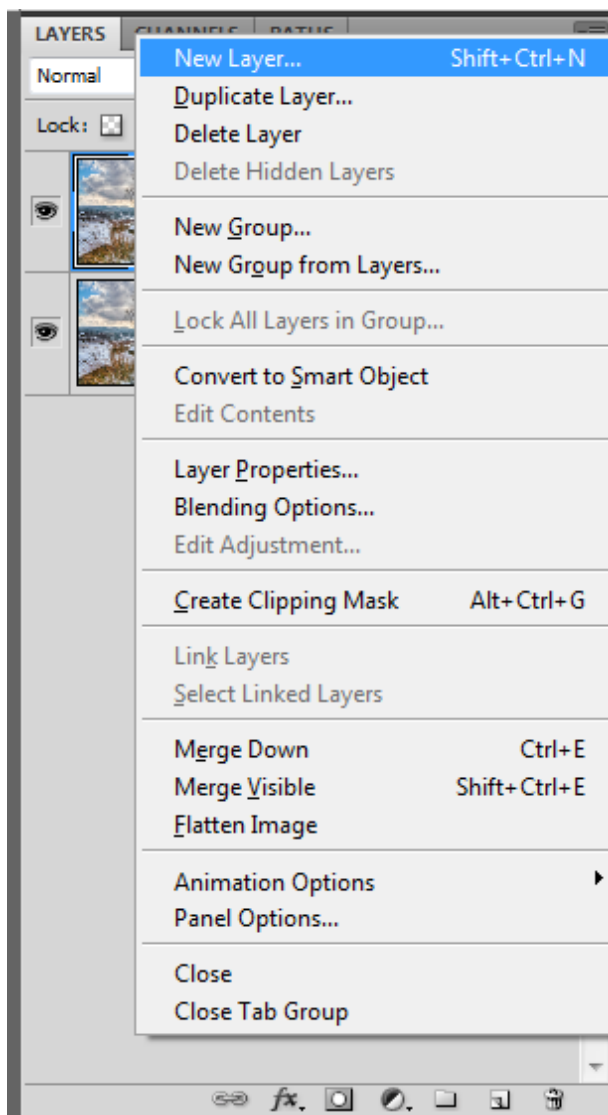


Fig 1.3 an example of a fly-out menu, in this case, accessed from the layers panel

Some panels are often represented by a strip of icons docked on the left hand side of the open panels. The full panel can be revealed by simple clicking on the icon. However, it is not always clear to beginners what these icons mean. The solution to this is to left-click with you mouse and drag on the left hand side of the icon strip. This will expand the icon strip to reveal the name of the function associated with that icon.

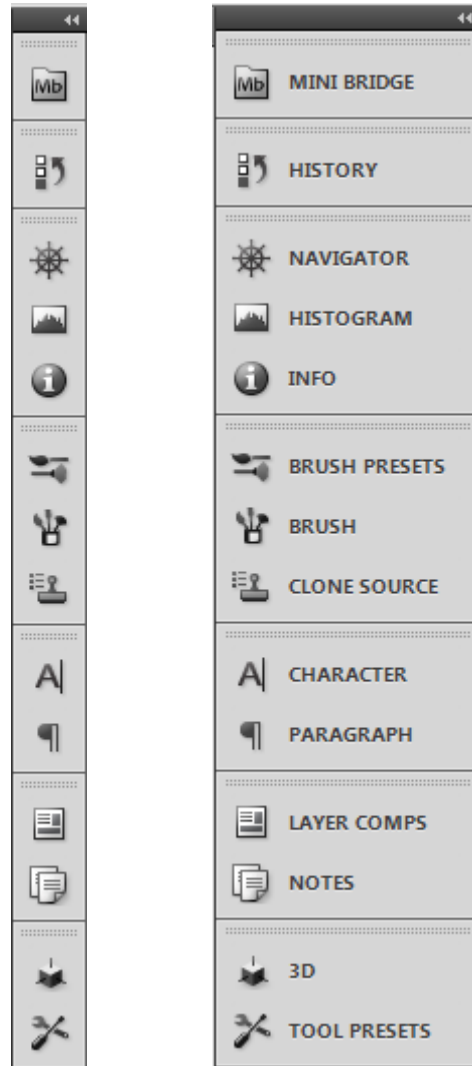


Fig 1.4 panel icons

The Tool Bar

The tool bar (or tool panel) is located by default on the left hand side of the work area. It contains mouse based tools that are used for editing and navigation in Photoshop. Most of the tool icons have a small black down-pointing arrowhead in the bottom right hand corner. This indicates that these are more tools that can be accessed by clicking and holding down the mouse button. Once the extended tools have appeared, you may release the mouse button and the tools will remain.

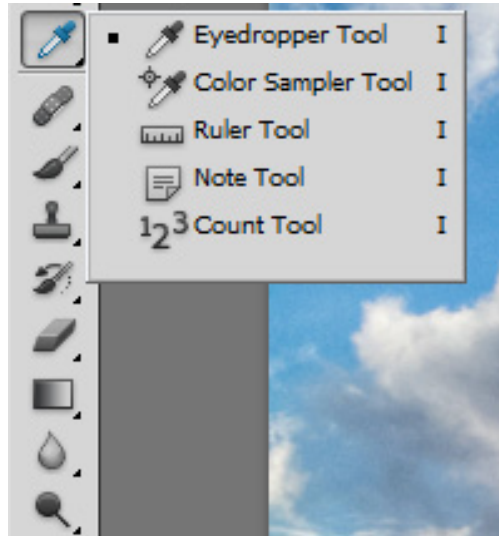


Fig 1.5 an example of multiple tools, available from a single tool icon.

The tools in the tool bar are loosely grouped according to their functionality. You may notice that there are small lines or spacers separating the groups of tools. The first group of tools are used for creating selections, the second group are the pixel editing tools, the third group are the vector editing tools and the final group are the navigation tools. At the bottom of the tool bar there is colour picker and very bottom is an icon that allows you to enter the quick mask mode for creating and editing selections.

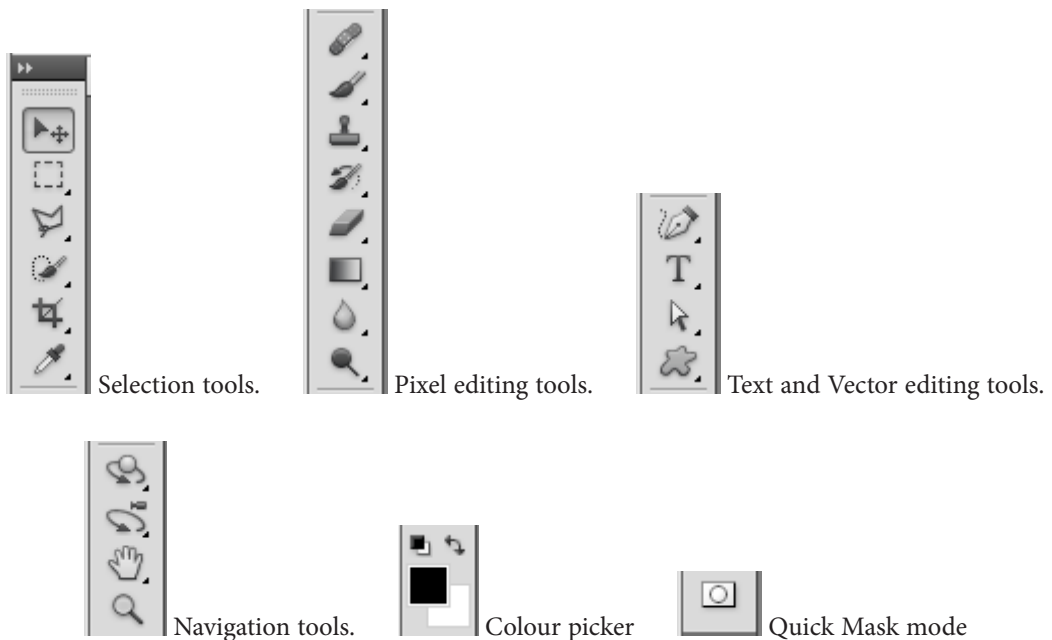


Fig 1.6 tool groupings

The Options Bar

The options bar is a context sensitive panel. Which is to say, that it changes depending on which tool is selected in the tool bar. It provides access the most important configuration settings for a particular tool. For example, in fig 1.7 the options bar has changed to provide the attributes associated with the Move tool. We have the show transform controls and a range of alignment options, which are faded in appearance, because in this case, no layer was highlighted in the layers panel.

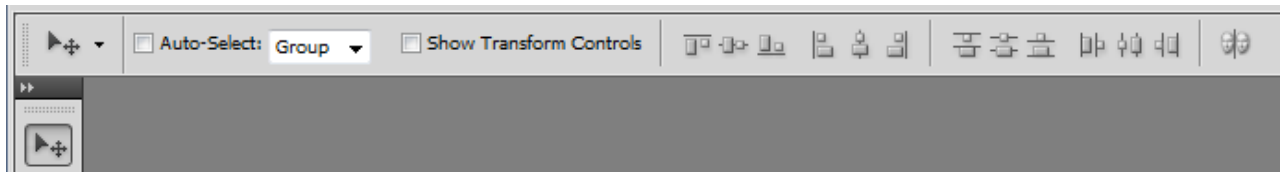


Fig 1.7 the options associated with the move tool.

Please click the advert

The advertisement features the MSM logo (M with a dollar sign) and the text 'MAASTRICHT SCHOOL OF MANAGEMENT'. A green banner with white dots contains the headline 'Increase your impact with MSM Executive Education'. Below this is a collage of diverse people. The main text reads: 'For almost 60 years Maastricht School of Management has been enhancing the management capacity of professionals and organizations around the world through state-of-the-art management education. Our broad range of Open Enrollment Executive Programs offers you a unique interactive, stimulating and multicultural learning experience. Be prepared for tomorrow's management challenges and apply today. For more information, visit www.msm.nl or contact us at +31 43 38 70 808 or via admissions@msm.nl'. The footer says 'the globally networked management school'.

The Menu Bar

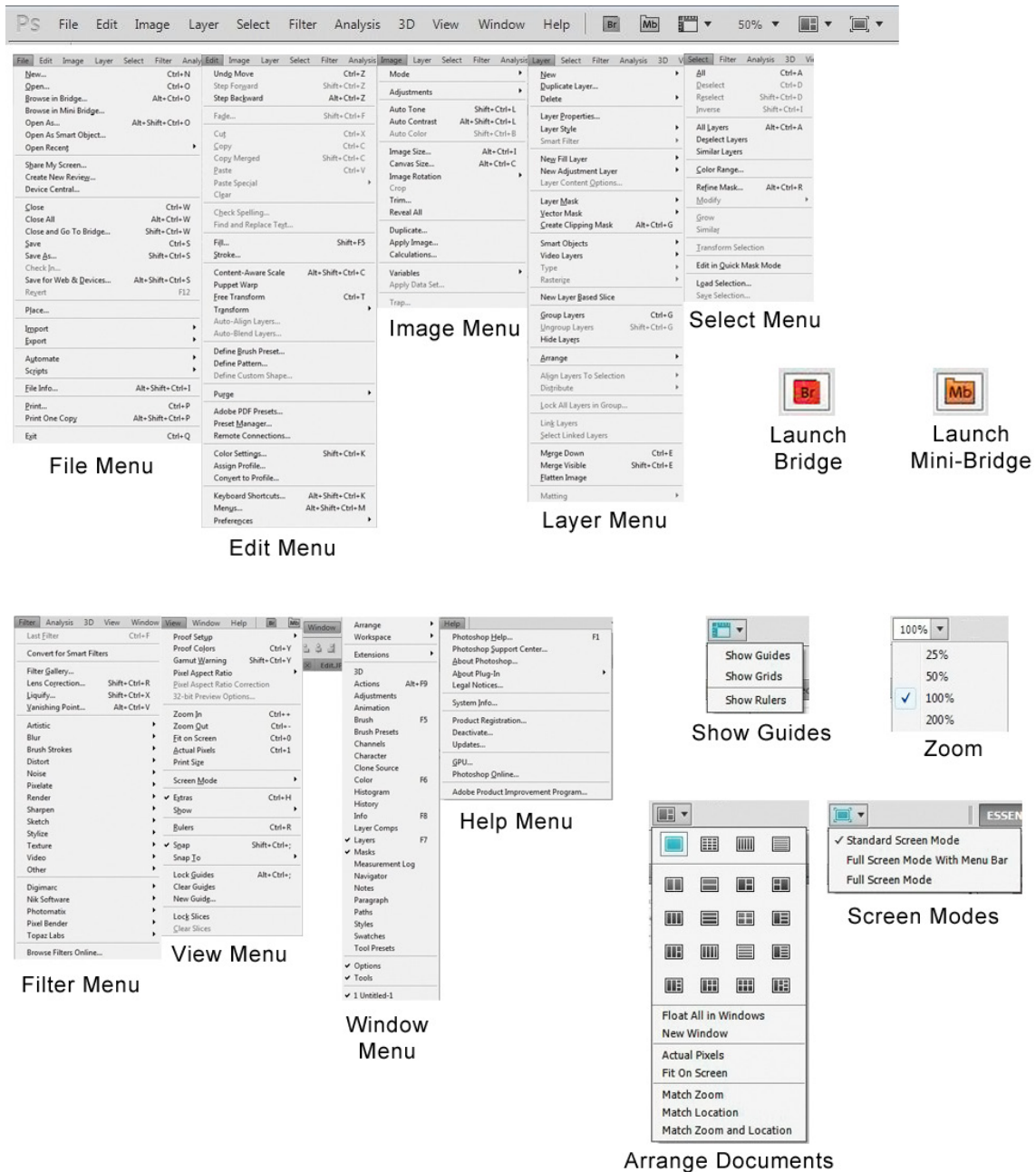


Fig 1.8 all of the menus and items located in the menu bar of the Photoshop standard edition

The menu bar contains many menu items and many sub menu items. The most important functions in the menu bar have been assigned keyboard shortcuts which are customisable from the Keyboard Shortcuts section of the Edit menu. Many of the functions in these menus are accessible from the Fly-out menus in the various panels. The option to work with keyboard shortcuts, the menu bar or the fly-out menu is one of personal choice and is down to your particular workflow, or may be determined by the type of input device you are using – mouse, graphics tablet or track pad etc. We will cover many of the menu items in detail in subsequent chapters, and some of the more advanced menus in subsequent books.

2 Basic Operations

Opening Files

Open

As with most programs, the option to open a file can be found in the File menu, fig 2.1. This operation also has a keyboard shortcut Ctrl-O/Cmd-O (PC/Mac).

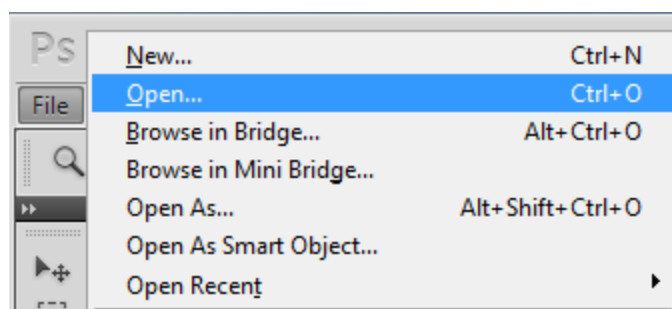


Fig 2.1 opening a file from the file menu

Once you've selected to open a file, the Open dialogue box will appear. From here you can navigate to your files and images, fig 2.2.

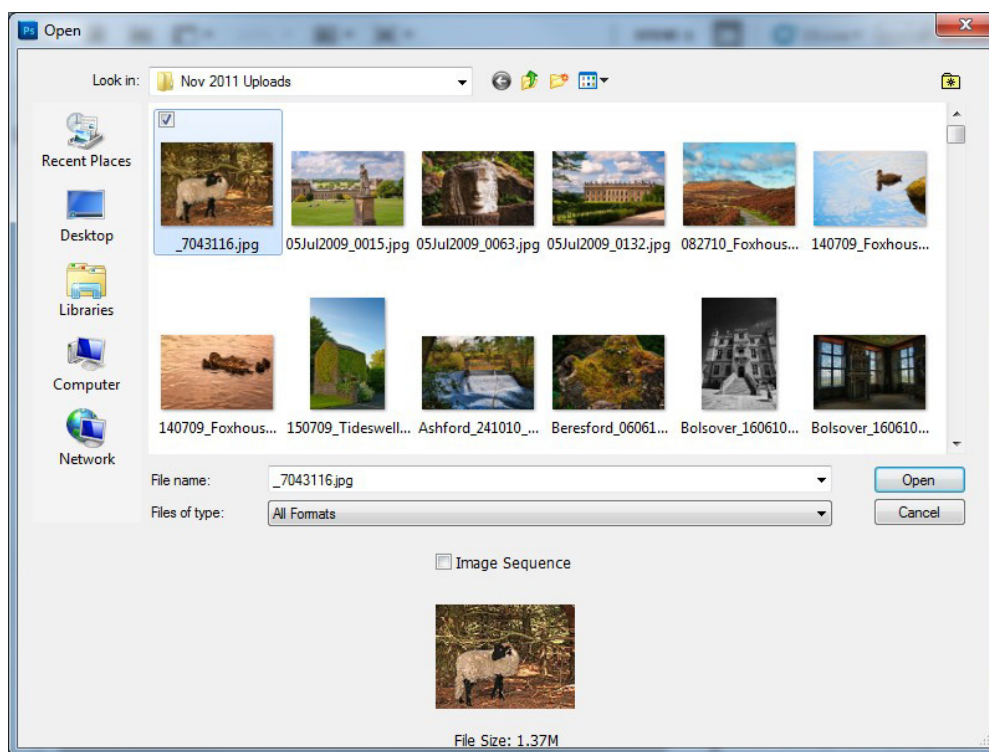


Fig 2.2 the Open dialogue box

Open As

In addition to the standard Open option in the File menu, there is also choice to Open As. The Open As dialogue box is almost identical to the Open dialogue box, except that it allows you open an image in one format and have it appear in Photoshop as a different format, Fig 2.3.

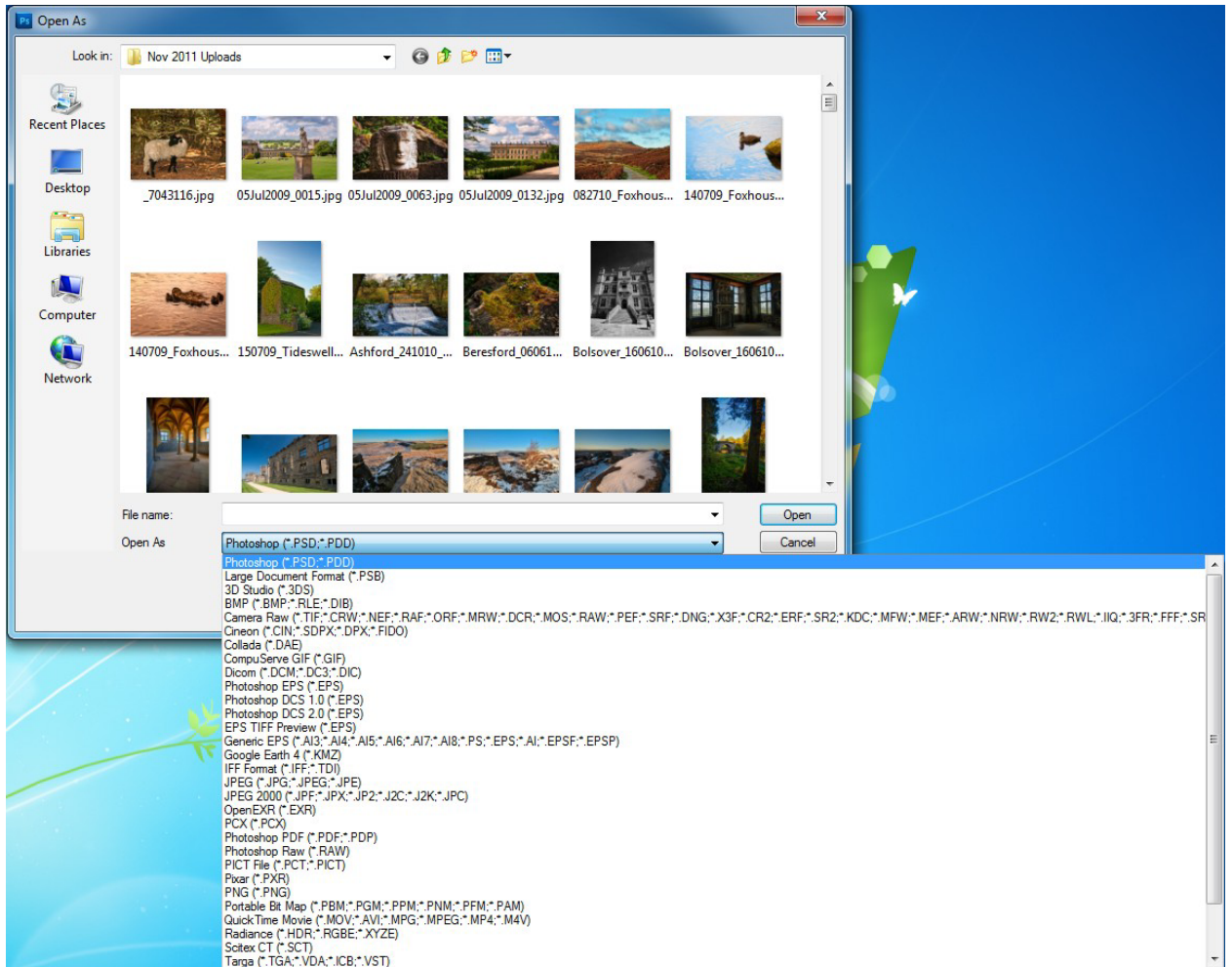


Fig 2.3 the Open As dialogue box, showing some of the many available file formats.

A useful application of the Open As command is that you can open most single layered file formats as a Camera Raw document. This will open the image into the Camera Raw plugin (fig 2.4) that is part of Adobe Photoshop. From here you can quickly and easily make simple adjustments to your image without having to get into complex editing techniques in Photoshop. Editing in Camera Raw will be covered in the second book in this series.

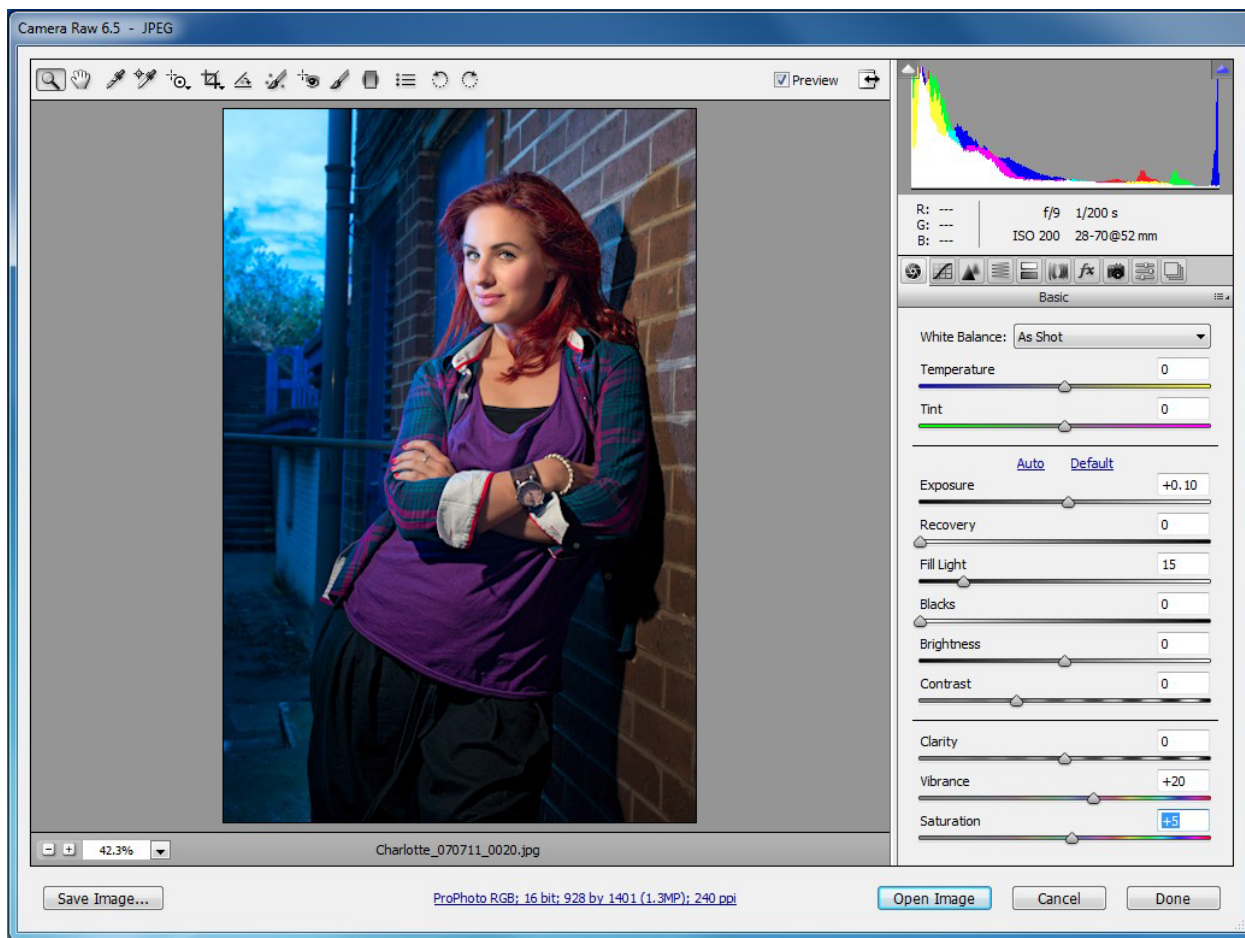


Fig 2.4 Camera Raw

Open As Smart Object

The third option is to use Open As Smart Object. A Smart Object allows non-destructive editing of your image and is useful if you are planning on making extreme edits or multiple transformations, such as scaling, to your image. Smart objects appear in the Layers panel with a small icon in the bottom right hand corner and if you apply a filter to them, they will display the filter below the layer fig 2.5. The application of a filter to a Smart Object is not permanent and the settings can be changed at any time by double clicking on the filter name in Layers panel.

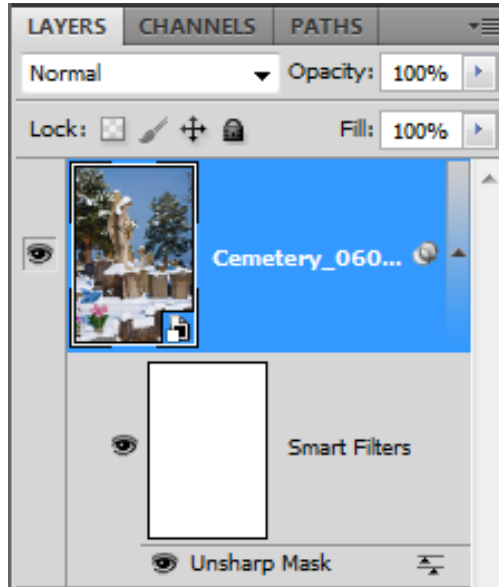


Fig 2.5 a Smart Object

There are several other ways of getting an image into Photoshop, including simply dragging an image onto the work area. You can also use one of the two file browsing options; Bridge and Mini-Bridge. Adobe Bridge and Mini-Bridge will be covered in detail in the second book in this series.

Please click the advert

See the light!
The sooner you realize we are right,
the sooner your life will get better!

A bit over the top? Yes we know!

We are just that sure that we can make your media activities more effective.



Get "Bookboon's Free Media Advice"
Email kbm@bookboon.com



CREDIT SUISSE

DAIMLER



Microsoft

bookboon.com

Saving Your Work

When you need to save your work you will go to the File menu and choose Save or Save As.

Save: If the file has been saved previously, the file will be updated. If the document has not been previously saved you will see the same dialogue box as if you had pressed Save As.

Save As: This command brings up a dialogue box (fig 2.6) where you can name the file, choose the properties that you wish to be included in the file and also choose the file format.

File Formats

When you click on the Format drop down menu in the “Save As” dialogue box (fig 2.6) you will notice that Photoshop allows you to save your file in many different formats. Some of these formats are now redundant and are only there to provide backwards compatibility. Others are specialist formats used in areas such as medical imaging. In reality you only need to know a few of these formats – the number depends on the type of work you are doing.

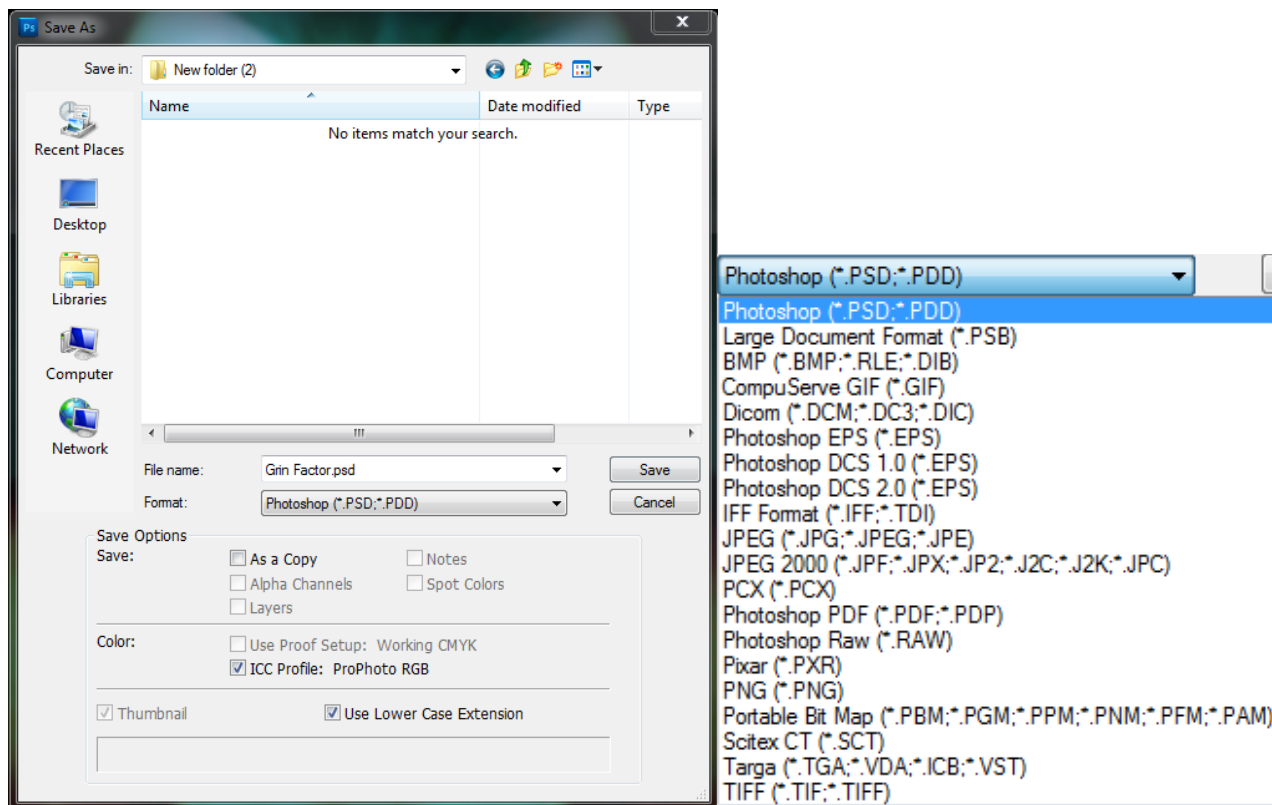


Fig 2.6 the Save As dialogue box and file formats

Popular and Useful File Formats:

PSD: This is Photoshop’s native file format and if you only use Photoshop as you image editor, it’s the one that will give you the most flexibility. It will retain all layers, adjustments and effects that you have applied to your image. This format also

supports high bit depth files up to 32bits. The file sizes for high bit depth files can be extremely large so think carefully before you consider saving your image in anything other than 8bits.

TIFF: Tagged-Image File Format (TIFF, TIF) has most of the same attributes as the PSD format (when opened in Photoshop). This format is useful for its compatibility with almost all software that will open image data. It also allows the use of several different compression methods to reduce the size of your file.

JPEG: Joint Photographic Experts Group (JPEG, JPG) format is mostly used for images that will be displayed on screen or the web. This file format uses “Lossy” compression, which is to say, that data is lost during the compression process resulting in a much smaller file, but may also compromise image quality. If your camera only takes JPEG images I recommend that you save the image as a PSD during the editing process, as repeatedly opening and saving JPEG images causes recompression of the images and can severely degrade the data, resulting in very noticeable compression artefacts.

GIF: Graphics Interchange Format (GIF) is used to display indexed colour mode graphics. This file format may only contain 256 colours so it is not commonly used for photographs. However, it has several characteristics that have made it very popular in web graphics.

- Small file size
- Supports transparency
- Supports animation

PNG: Like the GIF format this format is commonly used for web graphics. The PNG format is a lot more flexible in its support for 24bit photographic images and alternative colour modes than the GIF format. However, it is not as widely supported in web browsers.

We will look at the JPEG, GIF and PNG formats in more detail when we cover saving images for the web in book three of this series.

PDF: The Portable Document Format (PDF) is very useful for displaying files across multiple platforms and applications. It has the benefit of supporting compression, 16bit format and common colour modes, whilst retaining font, vector, raster information and Photoshop editing (if selected).

Creating a New Document

You can create a new document by selecting New from the File menu or by using the keyboard shortcut Ctrl-N/Cmd-N (PC/Mac). The New dialogue box allows you set all of the parameters for your new document and has a number of presets to get you started, fig 2.7 and fig 2.8. It is important to set up your document correctly. For example, you need it to be at the correct size and resolution for its intended purpose. If you select a paper size preset, it will automatically set the resolution for print. Likewise, if a web preset is selected the resolution will be set accordingly.

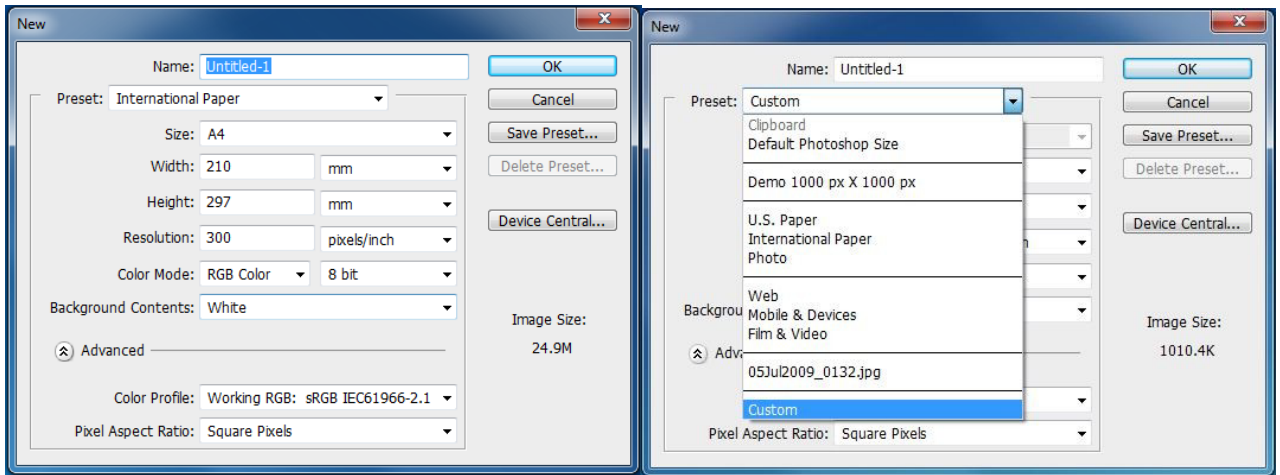


Fig 2.7 the New dialogue box and Preset options

Please click the advert

An advertisement for RWE. It features a group of diverse people of various ages and ethnicities holding a large green banner. The banner contains the text "I WANT TO CHANGE DIRECTION, AND THE WORLD." in white capital letters. Below the banner, the website "GOT-THE-ENERGY-TO-LEAD.COM" is written in blue. At the bottom left, the RWE logo is displayed with the tagline "The energy to lead". The background is a light blue sky with a red balloon and a wind turbine in the distance. A woman in a business suit is sitting on the ground in the bottom right corner, holding a briefcase. The overall scene is set on a cobblestone path.

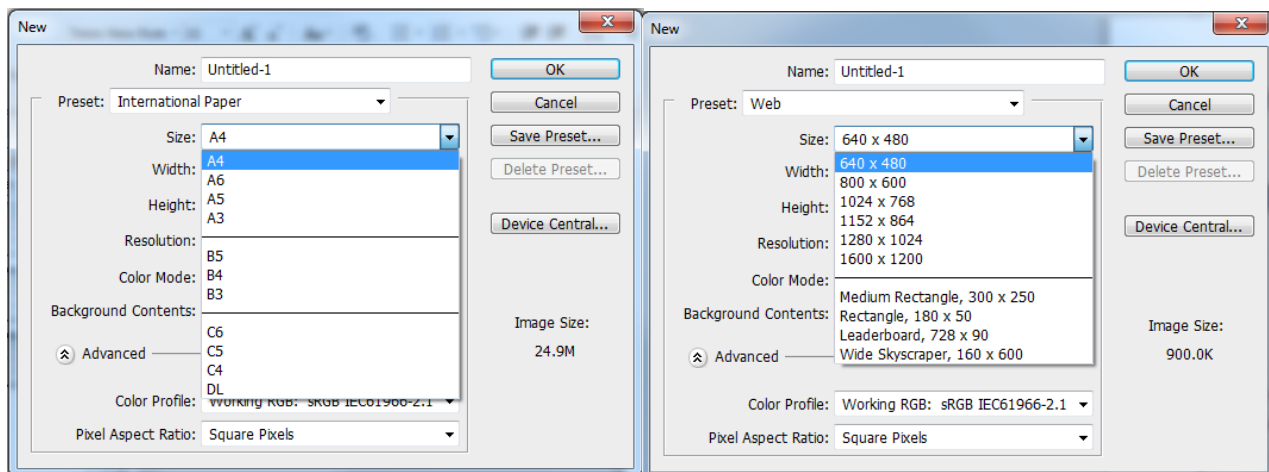


Fig 2.8 International Paper and Web size options

There are other options in the New dialogue box that also need to be determined:

- Colour Mode – For example, RGB for web design and photography and CMYK for commercial print
- Bit Depth – 8 bit is generally fine unless you are intending to perform some major image editing or have a lot of gradients in a design, in which case it would be better to work in 16 bit mode and then convert to 8 bit once the editing process is completed. Web graphics must be 8 bit.
- Background Contents – This determines the colour of your background layer.

Under the Advanced section of the dialogue box there are two options:

- Colour Profile – you should leave the colour profile set to sRGB except for those wishing to do advanced photographic work, in which case you may wish to use Adobe RGB or ProPhoto RGB.
- Pixel Aspect Ratio – in almost all cases this should be set to Square Pixels. Rectangular pixels are only generally used to correctly display widescreen video content.

When you click OK, you will have a new empty document with a single layer.

3 Navigating and Zooming

The Navigator Panel

When you are zoomed in to an image in Photoshop it is easy to lose where you are. By quickly checking the Navigator panel, the red square (fig 3.1) will indicate the zoomed area. Navigation can also be undertaken by dragging the red square to a new position.

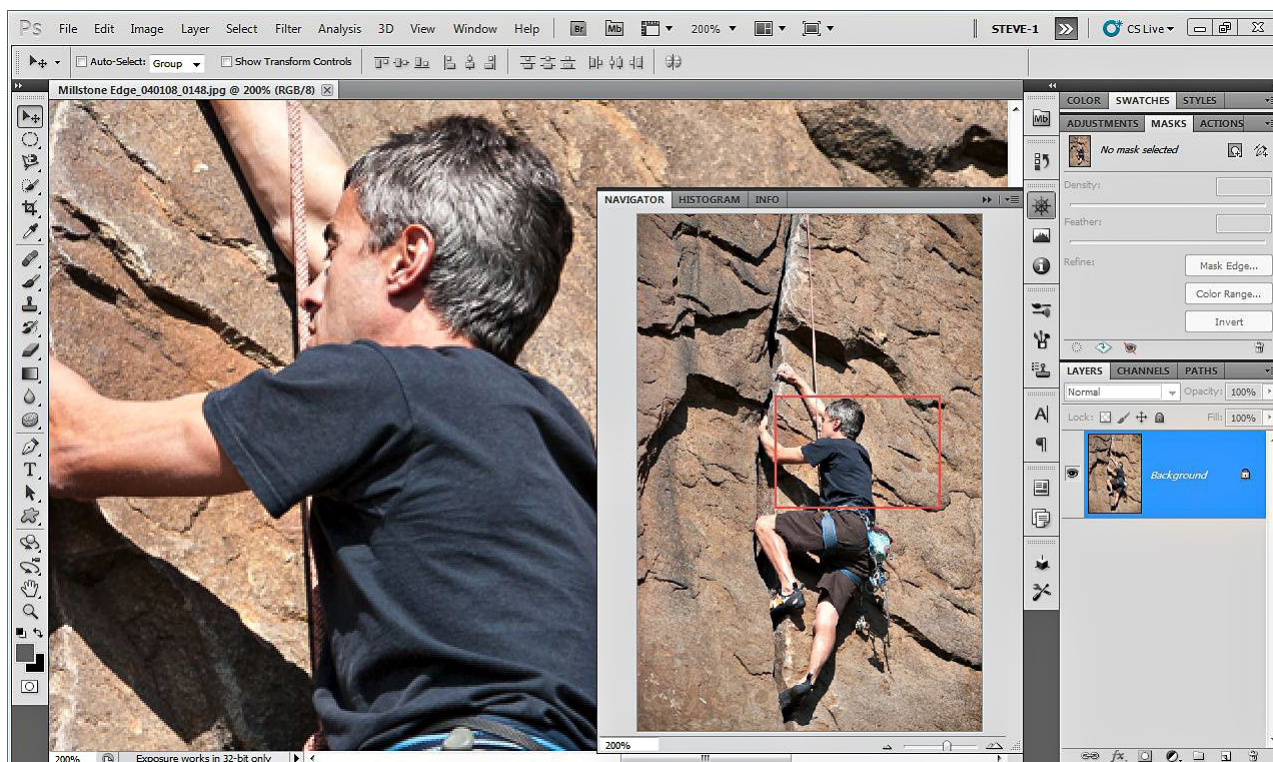


Fig 3.1 the Navigator Panel

The Hand Tool

The Hand tool is used for moving the image around whilst zoomed in. In CS5, flick panning is possible and can be enabled or disabled in the general preferences dialogue box which is found in the Edit menu on the PC, or the Photoshop menu on the Mac. If you are performing some close up editing and need to quickly access the Hand tool, holding down the Space Bar will temporarily select the tool, your original tool will be reinstated once the Space Bar is released.

The Zoom Tool

When the zoom tool is selected, the default setting is to enable you to zoom in to an image in two ways:

- Click on the desired portion of the image to zoom in predefined increments.
- Click and drag to define a particular area that you wish to zoom in on.

When you wish to zoom back out, you can either click on the icon with the magnifying glass containing the minus symbol (fig 3.2), or Alt/Option (PC/Mac) – Click to temporarily change the tool. The second method is preferable because unless you remember to click on the zoom in icon (the one with the plus), you may zoom out when you want to zoom in the next time that you come to use the tool.

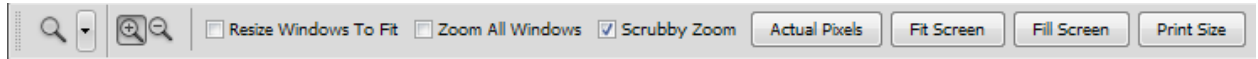


Fig 3.2 the Options associated with the Zoom tool.

If you have the Scrubby Zoom option selected (fig 3.2) you can quickly zoom in to your image by clicking and dragging to the right. You can then zoom back out by clicking and dragging to the left.

There are four buttons in the Zoom options that can help you navigate your image:

- Actual Pixels – shows your image at 100% magnification
- Fit Screen – zoom’s your image to fit the available work area, respecting the panels and tool bar
- Fill Screen – zoom’s you image to fill all the available work area without respect the position of any open panels.
- Print Size – show the image at the size it will be printed based on the documents resolution setting.

The above four options are also available from the View menu.

Please click the advert

Who is your target group? And how can we reach them?

At Bookboon, you can segment the exact right audience for your advertising campaign.

Our eBooks offer in-book advertising spot to reach the right candidate.



Contact us to hear more
kbm@bookboon.com










Useful Keyboard Shortcuts

Experienced Photoshop users will often use keyboard shortcuts for navigating and zooming. I recommend that you try to learn the following shortcuts, as it will speed up your workflow and productivity. It will also, ultimately, make using Photoshop a more pleasant and rewarding experience.

Keyboard/Mouse Shortcut	Action
Ctrl + Alt/Option (PC/Mac) + 0	100% Magnification
Ctrl + 0	Fit Screen
Ctrl + Spacebar	Temporarily select the Zoom tool (Zoom in)
Ctrl + Alt/Option (PC/Mac) + Spacebar	Temporarily select the Zoom tool (Zoom out)
Spacebar	Temporarily select the Hand tool
Tab	Hide the Tool bar and Panels
Shift + Tab	Hide the Panels but keep the Tools
Page Up or Page Down	Scroll Up or Scroll Down the area contained within the screen
Shift + Page Up or Page Down	Scroll Up or Scroll Down in 10 units
Double Click on the Zoom tool icon	100% Magnification
Double Click on the Hand tool icon	Fit Screen

4 Simple Global Adjustments

In this section we are going to take a look at Global Adjustments. This means adjusting the whole image to correct colour, contrast or exposure of an image. It can also be used a special effect to create a specific look.

There are two different way in which you can apply an adjustment to and image. The first is to go to the Image menu and choose Adjustments:

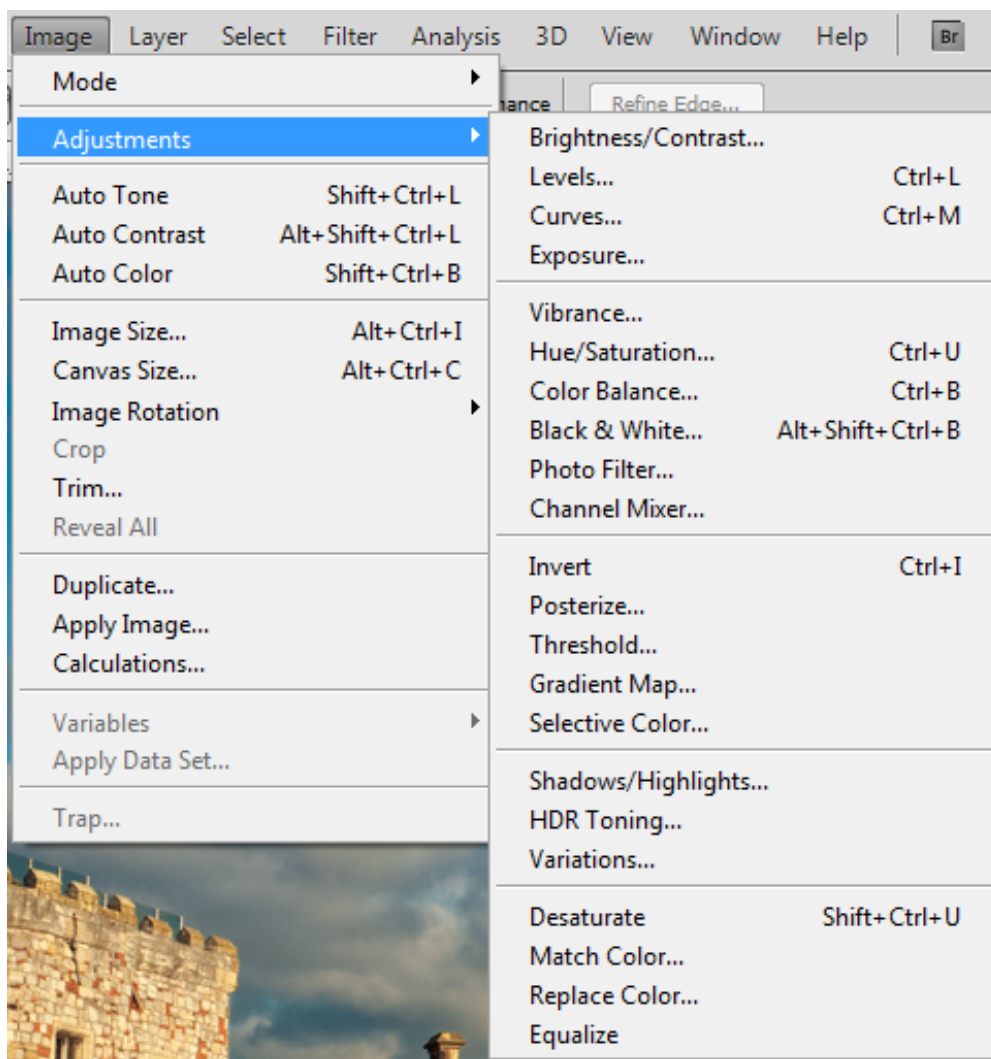



Fig 4.1 the list of Adjustments available under the Image menu

There are 22 different adjustment that you can apply to you image from this menu. However, if you apply an adjustment to your image and save it, the adjustment is permanent and destructive. The second method for applying an adjustment is non-destructive and utilizes a special type of layer called an Adjustment layer.

You can apply an adjustment layer by clicking on the  icon at the bottom of the layers panel (if you can't see your layers panel press the F7 key to open it). Alternatively, you can create an adjustment layer from the Layers menu by choosing New Adjustment layer. You can also apply an adjustment layer by clicking on the appropriate icon in the Adjustment list. The Adjustment list is visible in the Adjustments panel if no adjustment layer is highlighted in the Layers panel.

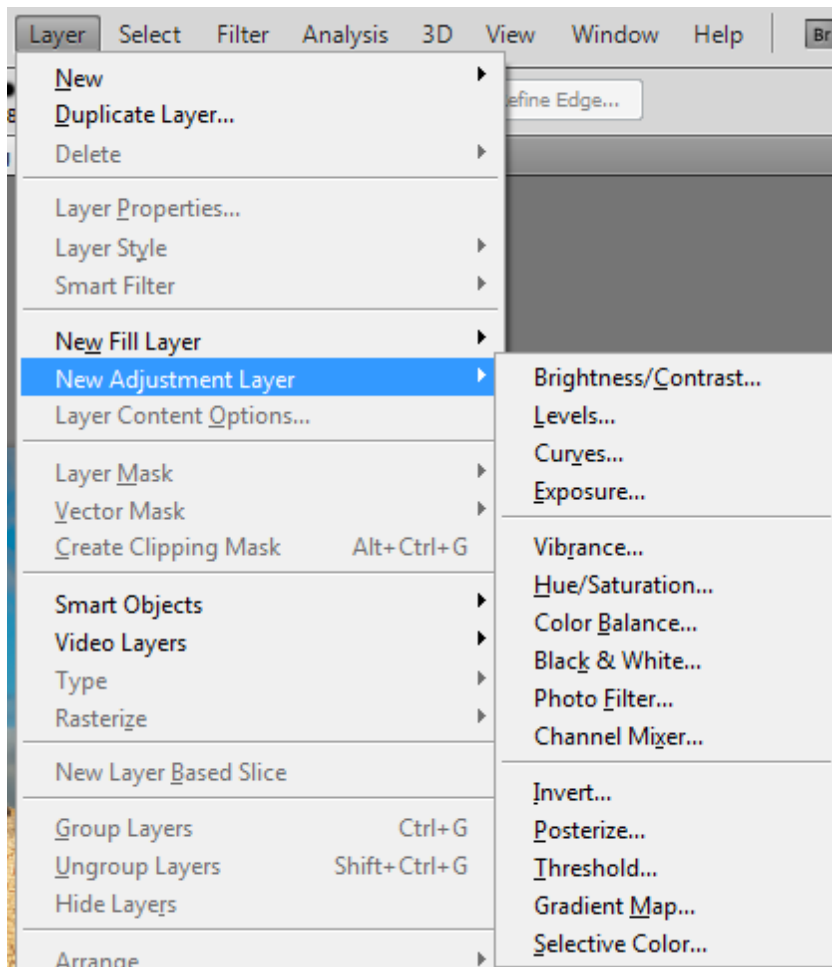


Fig 4.2 the list of Adjustment Layers available from the Layer menu

You will notice that this time there are only 15 adjustments instead of the 22 we saw previously. However, with the exception of Shadows/Highlights, we have all of the important adjustments available to us.

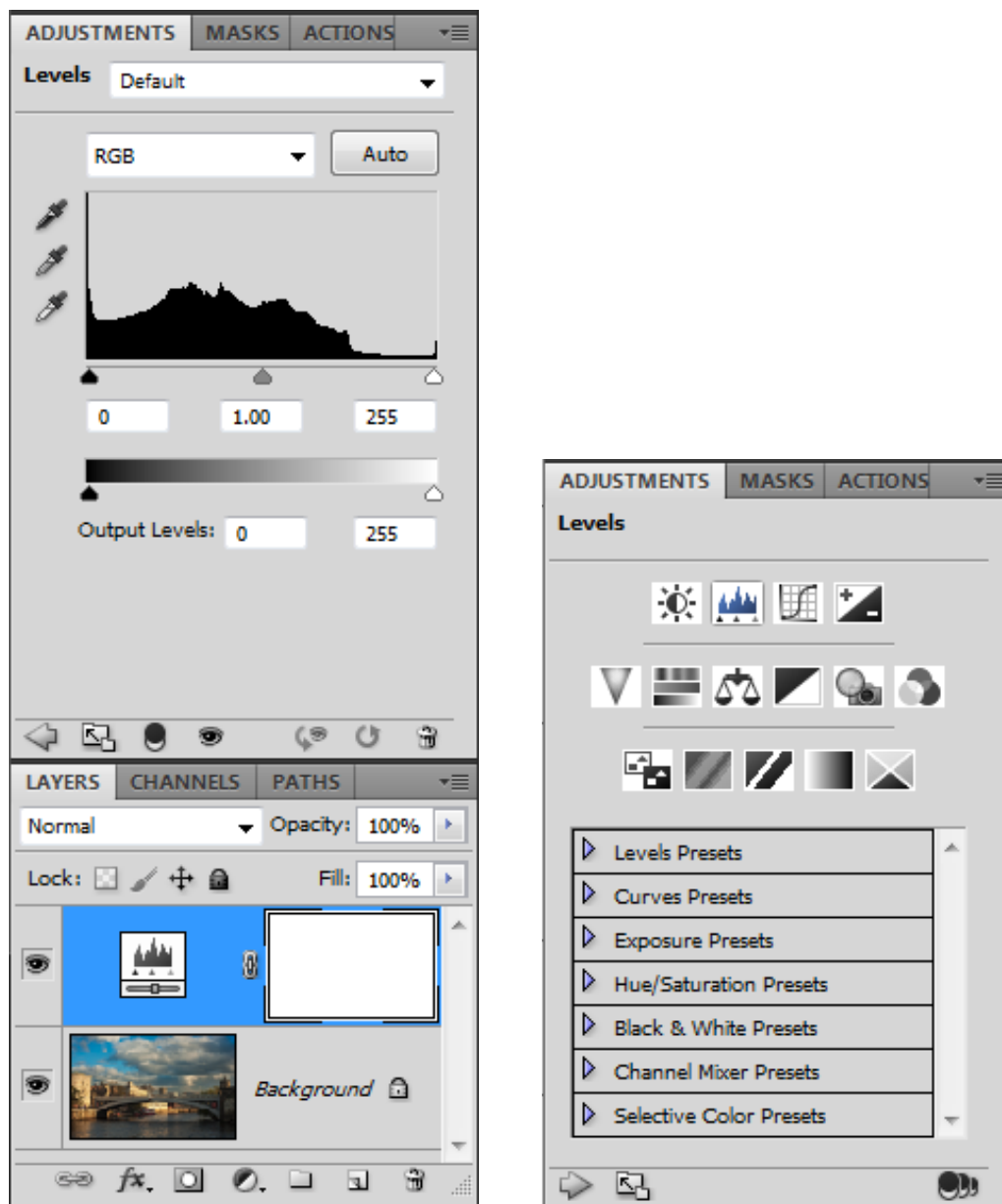


Fig 4.3 an Adjustment Layer in the Layers Panel and the Adjustment Panel

Once you've added the adjustment layer it will be visible as a new layer above your image in the Layers panel, fig 4.3. The dialogue box for the adjustment will also appear in the Adjustments panel (if you can't see the Adjustments panel, select it from the Windows menu).

There are many different adjustments, but the most useful adjustments for beginners to start with are:

- Levels
- Hue/Saturation

Levels

Levels is an extremely powerful tool for adjusting exposure problems and can also be used to colour correct an image.

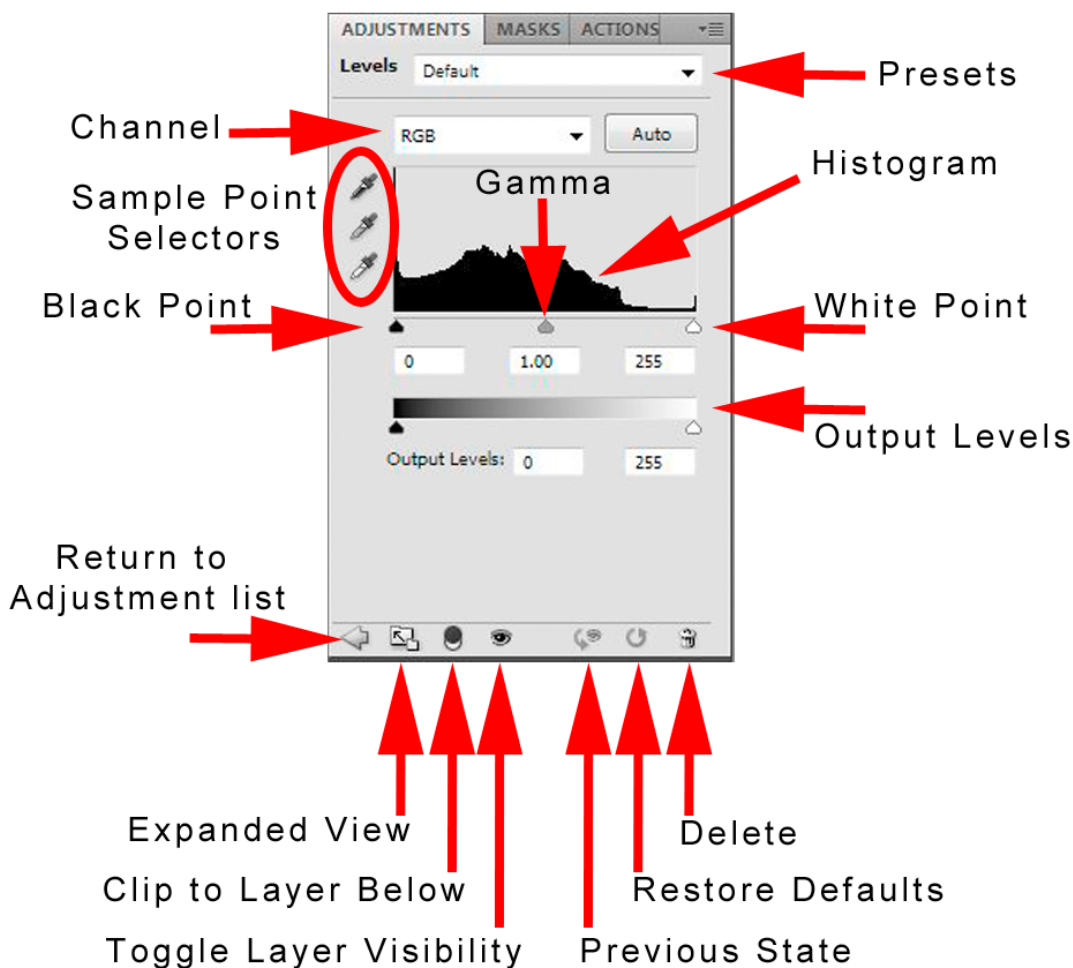


Fig 4.4 the Levels Adjustment

When you apply a Levels correction you will notice that there is a histogram, this is a representation of all of the tonal values in the image. The black point slider on the left is set at 0 which is pure black and the white point slider on the right is set at 255 which is pure white. This gives us a complete range of 256 possible values.

The middle Gamma slider works differently to the black and white sliders. If the Gamma is adjusted to the left (towards the black end of the scale) the image will get lighter in the mid tones and the opposite will happen if you move it to the right, the image will get darker in the mid tones.

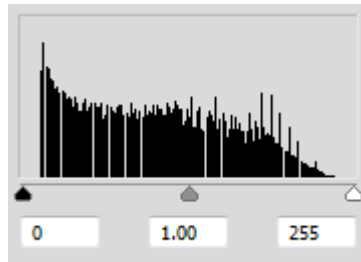


Fig 4.5 the Levels histogram showing values from 0 (black) to 255 (white)

In this Histogram we can see that the dark values don't go all the way to the black point on the left and the white values don't go all the way to the white point on the right. This means that there are no true blacks or whites in the image and this may result in the image lacking in contrast. We can adjust this histogram by moving the black and white point inwards to meet the beginning and end of the pixel values.

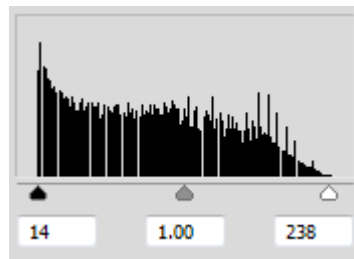


Fig 4.6 the black point and white point have been adjusted to give a full range of tones from black to white

Please click the advert

An advertisement for Nyenrode Business Universiteit. The top half shows a photograph of a large brick castle with a central tower and a white stone bridge in the foreground. Overlaid on the bottom half of the image is a dark blue banner with white text. The text reads: "THE BEST MASTER IN THE NETHERLANDS" in large, bold, white capital letters. Below this, it says "Master of Science in Management". To the right of the text is a gold circular seal with the text "BEST MASTER IN THE NETHERLANDS" around the perimeter. At the bottom of the banner, it says "Source: 'Keuzegids Higher Education Masters 2011'." and "*In category business administration and accountancy & controlling." The Nyenrode Business Universiteit logo is in the bottom left corner, and the website "www.nyenrode.nl" is in the bottom right corner.

The black and white values have been changed and in the left hand box the input value now reads 14. This means that any pixel values of 14, or less, will be mapped to 0 (black). Similarly, the right hand input box now reads 238. This means that any pixel values in the image of 238 or greater will be mapped to 255 (white). By moving these sliders inwards to meet where the pixel values begin and end, we now have an image that contains a full range of values from pure black to pure white. This results in an increase in contrast within the image.

If you are confident as to where your black points and white point should be in your image, you can select the appropriate sample point selectors (commonly known as the eyedropper tools, fig 4.7) in the Levels dialogue box and click directly in your image to set the value. The eyedroppers will also attempt to create neutral values, so they will remove any colour cast that your image may have.



Fig 4.7 the black point, gamma and white point eyedroppers

Hue Saturation

The Hue/Saturation adjustment allows us to manipulate the colours in an image, either globally or independently.

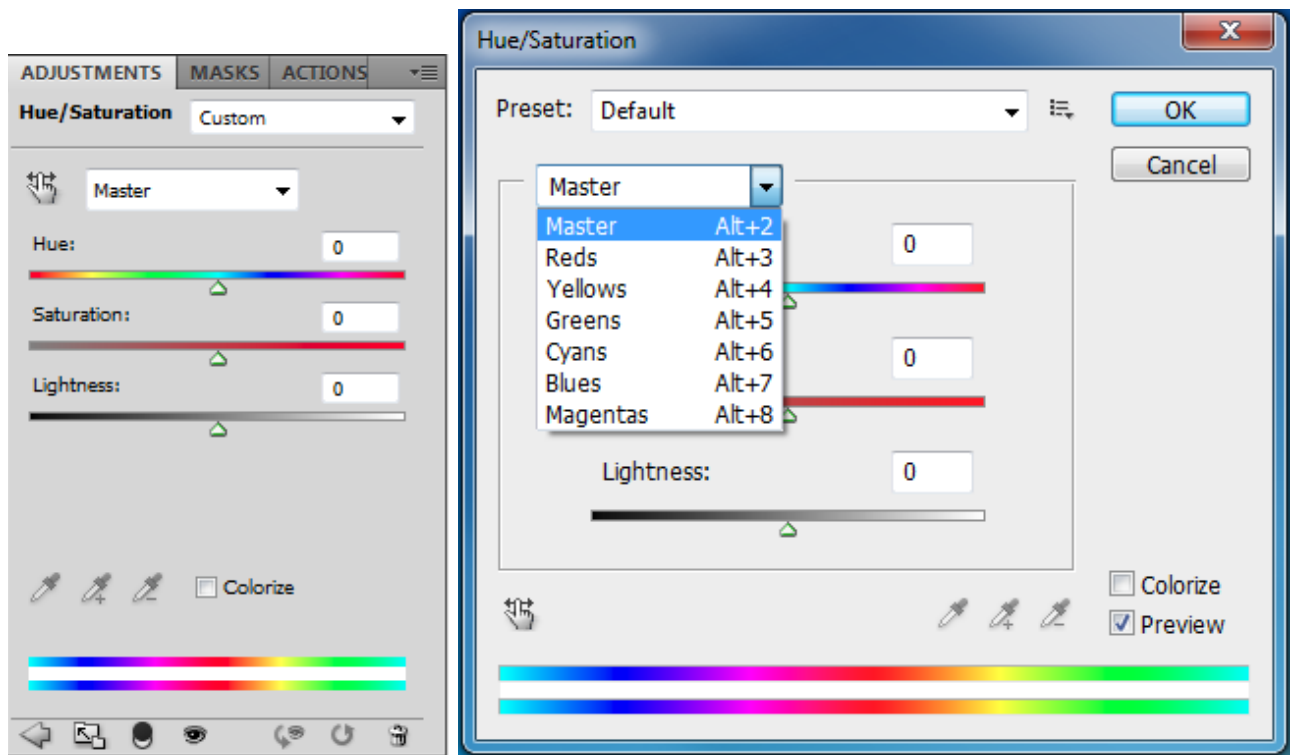


Fig 4.8 Hue/Saturation in the Adjustments Panel (left) and as a free floating dialogue box (right)

As with the Levels adjustment, I recommend that you apply it as an Adjustment layer. In the Hue/Saturation dialogue box we have three main sliders:

- Hue: affects the colour value. When you move it the spectrum of colours is shifted. This is not useful as a global adjustment but can be very useful when applied to a specific colour.
- Saturation: represent the intensity of the colour. Moving the sliders value to the right will make the colours in your image appear stronger. Moving the slider to the left will decrease the intensity of the colours and if you move it all the way to the left, will result in a grayscale image. For the best and most natural looking results you should do this on a per-colour basis.
- Lightness: as the name implies, will affect the lightness of the image and unless used with care, can result in loss of contrast.

The default setting is to affect all of the colours in the image, as indicated by “Master” in the drop down menu. However, individual colours can be affected independently, by either selecting the appropriate colour from the drop down menu, fig 4.8 (right), or by using the small icon that depicts a finger on a left and right pointing arrow, to click directly on the image. Clicking and dragging to the right will increase the saturation of the selected colour and clicking and dragging to the left will desaturate the selected colour.

Near the bottom of the panel is a check box called Colorize, fig 4.8. If you click in this box your entire image will be tinted with one specific colour. The Hue slider will allow you to change the colour and the Saturation slider will adjust the intensity.

Please click the advert

With us you can
shape the future.
Every single day.

For more information go to:
www.eon-career.com

Your energy shapes the future.

e.on



Fig 4.9 the effect of clicking in the Colorize check box

5 Layers

Layers

Beginners to Photoshop often have a problem with the concept of layers and how they can be made to interact with one another. They can be partially hidden using layer masks, they can be blended together in several different ways, they can be re-ordered, renamed, linked, grouped, clipped, duplicated and flattened.

So what are layers? Layers are simply stacks of images, objects or text. Layers are very powerful because they allow us to edit and move individual image components without affecting other elements within the scene. Let's look at an example of a layered document, fig 5.1.

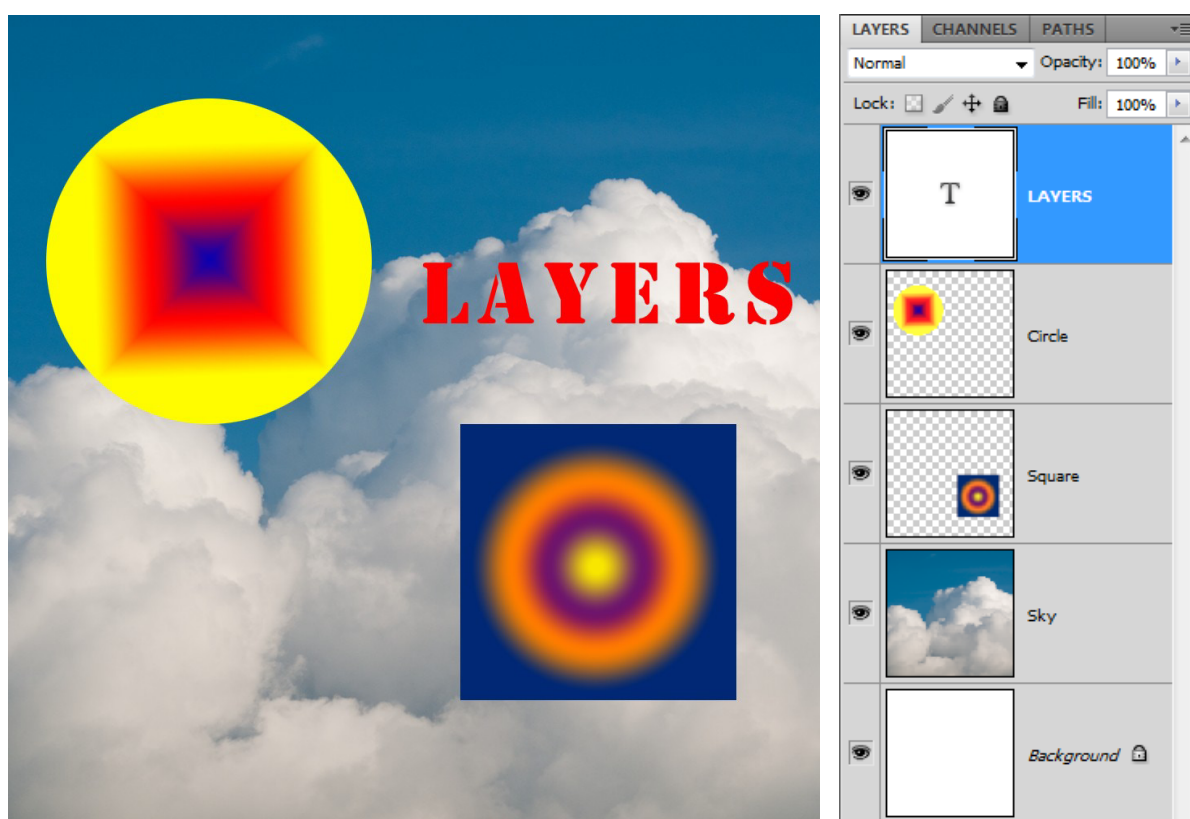


Fig 5.1 a layered Photoshop document and the corresponding Layers panel.

In the image of the Layers panel, fig 5.1, we can see that there are a total of 5 layers. From the bottom upwards, there is a Background layer, an image of the Sky, a layer containing a Square, a layer containing a Circle and a Text layer which contains the word “LAYERS”. We can see 4 of the 5 layers; the background layer is completely covered up by the Sky layer. The two shape layers and the Text layer do not completely cover the Sky layer because they are surrounded by transparency which allows the underlying layers to show through. Transparency is represented in the Layers panel as a chequer-board pattern and is apparent in this example, in the Square and Circle layers. Finally, the Text layer is a special kind of layer and although text is always surrounded by transparency, it does not show in the Layers panel.

Aligning and Moving Layers

To move the contents of a layer, select the Move tool which is located at the top of the Tools panel, fig 5.2. You must then highlight the layer you wish to move by clicking on it in the Layers panel. Once the layer is selected it will appear blue, fig 5.3. With a layer selected, you can use the Move to click and drag the layer into a new position.



Fig 5.2 the Move tool

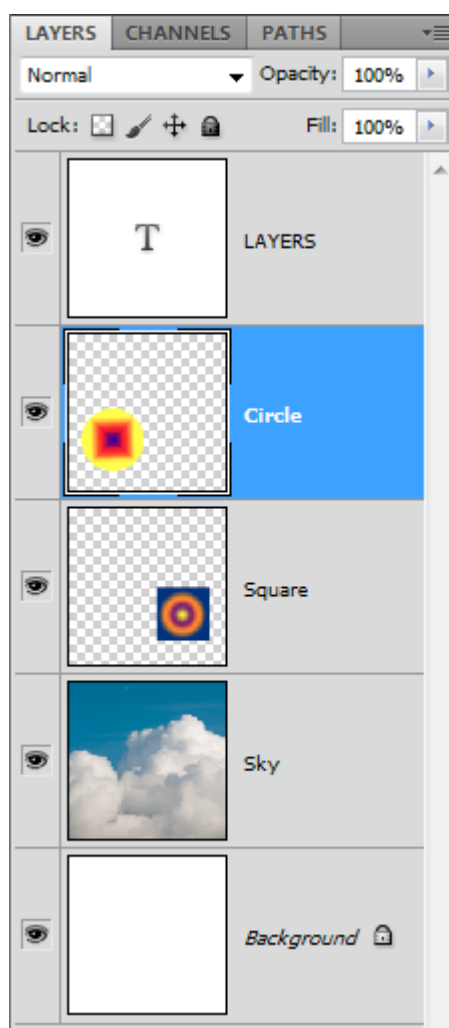


Fig 5.3 the "Circle" layer is selected, as indicated by the blue highlight.

Multiple layers can be selected by choosing a layer and then holding down the Shift key and clicking on different layer. All of the layers between the two selected layers will be highlighted in blue, fig 5.4. Non-adjacent layer can be selected by Ctrl/Cmd-Click (PC/Mac) on the required layers.

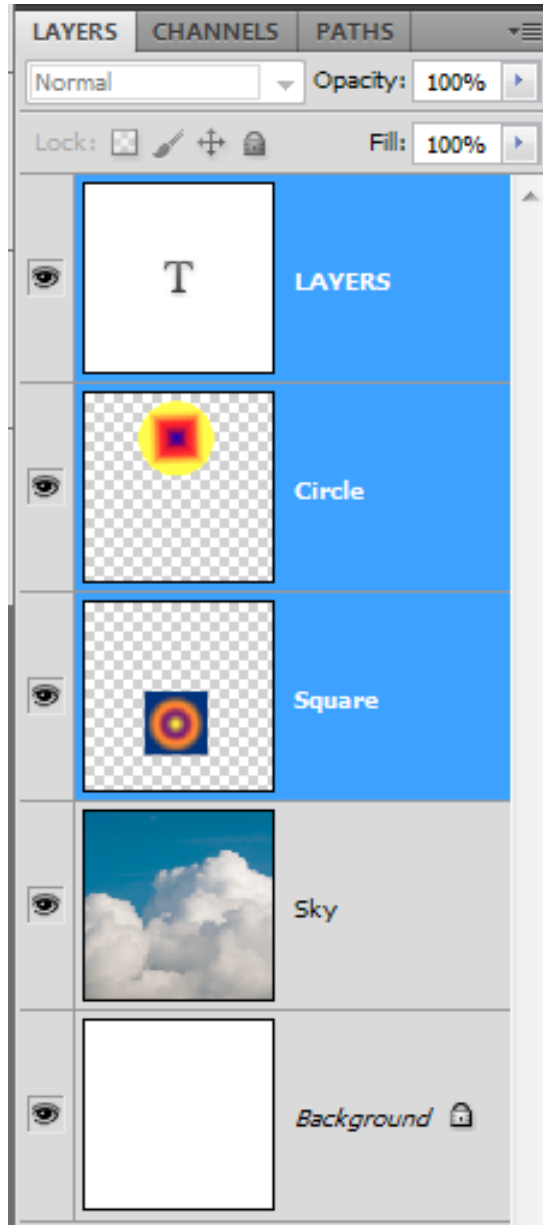


Fig 5.4 by clicking on the Text layer and Shift clicking on the “Square” layer, all layers in between the two selected points have been selected.

With several layers highlighted, multiple layers can be moved simultaneously. However, they will maintain their relative positions to one another. If you wish to change the position of the layers so that they are aligned with one another, you can use the Alignment tools that are present in the Options bar once the Move tool is selected, fig 5.5.

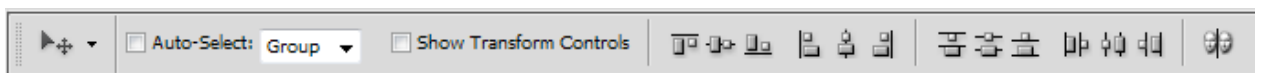














Fig 5.5 the Align and Distribute functions are available once the Move tool is chosen in the Tools panel and multiple layers are highlighted in the Layers panel.

-  Align top edges
-  Align vertical centers
-  Align bottom edges
-  Align left edges
-  Align horizontal centers
-  Align right edges
-  Distribute top edges
-  Distribute vertical centers
-  Distribute bottom edges
-  Distribute left edges
-  Distribute horizontal centers
-  Distribute right edges

Please click the advert

Do your employees receive the right training?

Bookboon offers an eLibrary with a wide range of Soft Skill training & Microsoft Office books to keep your staff up to date at all times.



Contact us to hear more
kbn@bookboon.com



CREDIT SUISSE

DAIMLER



Microsoft

bookboon.com

Layer Interactions

The manner in which the individual layers in a document may interact with each other is editable in a number of ways. The most basic interaction is Opacity. By default the Opacity of a layer is 100%, but this can be adjusted by moving the slider that appears when you click on the right pointing arrow at the side of the Opacity value, fig 5.5. Alternatively, you can just position your cursor over the word “Opacity” and drag to the left to reduce the value, and to the right to increase it.

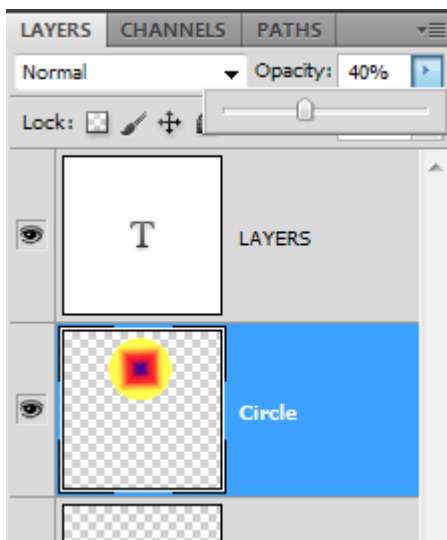


Fig 5.5 the Opacity of the “Circle” layer has been lowered to 40%.

When we reduce the Opacity of a layer it allows any layers that may be below the altered layer, to be partially visible, fig 5.6.

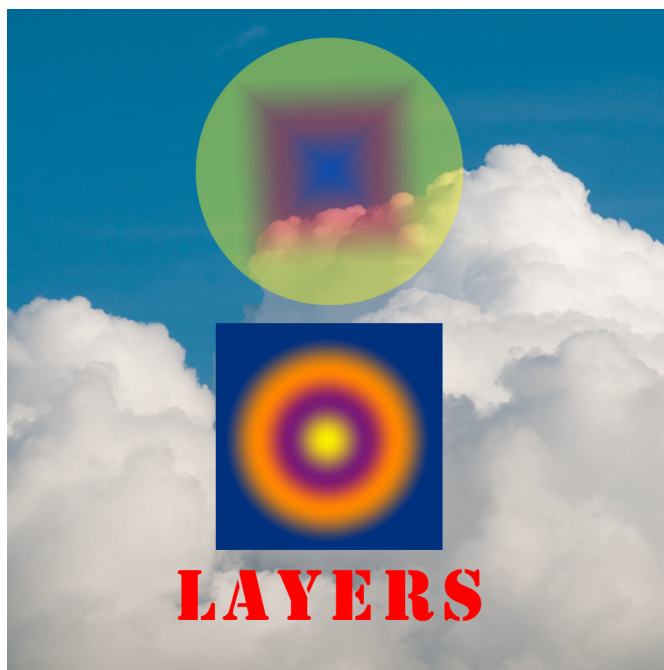


Fig 5.6 the reduced Opacity of the “Circle” layer allows the underlying layers to show through.

Blend Modes

Layer can also interact with one another by using Blend Modes. They allow one layer to affect underlying layers in a number of different ways. We will be taking a look at the Blend Modes in more detail in the second book in this series. However, to help you to understand in broad terms what their function is, similar modes are grouped together, fig 5.7. You can alter a layers blend mode by clicking on the down arrow next to the word Normal in the Layers panel.

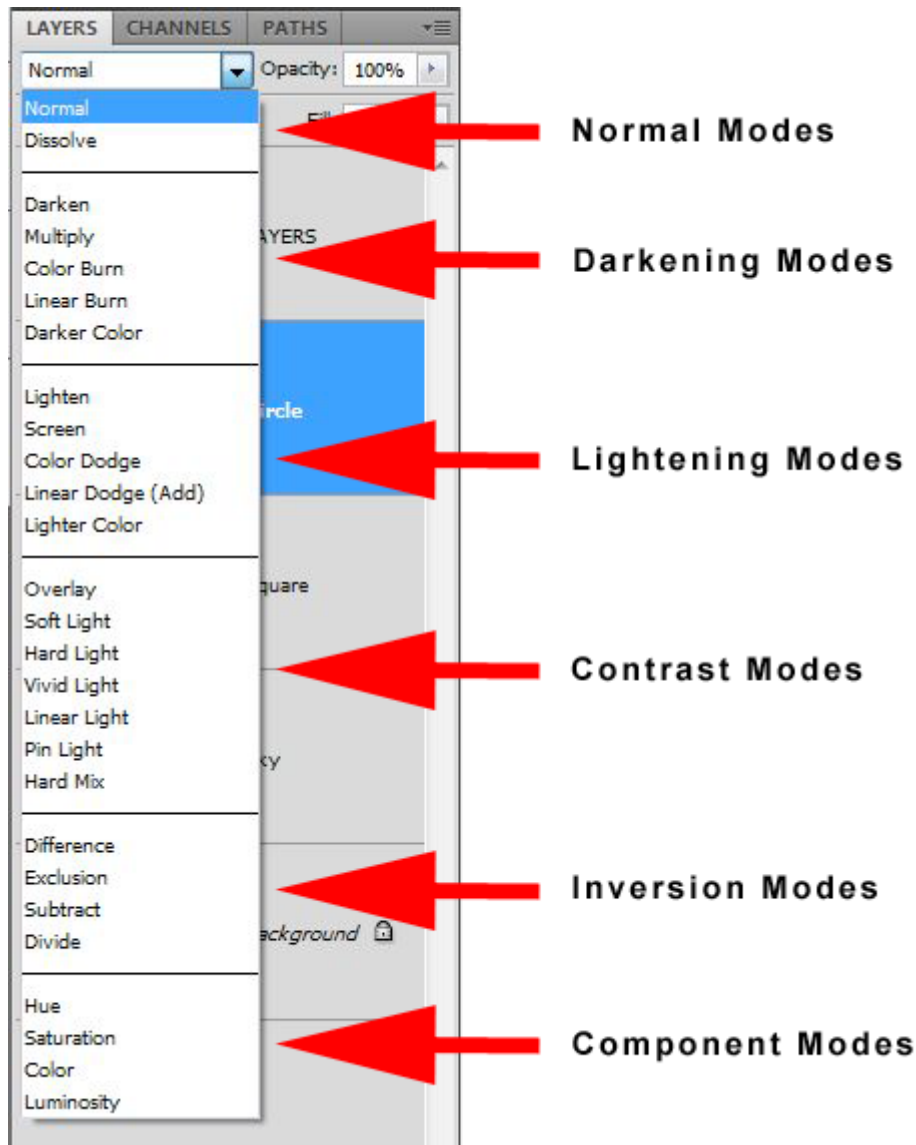


Fig 5.7 the Blend Mode groupings that can be found in the Layers panel.

Naming Layers

It can be very easy to lose track of which layer is which if you have a many layered document. It is a good idea to get into the habit of naming your layers as you create them. To rename a layer simply double click on the name of the layer in the Layers panel and type in the new name.

Text Layers

Adding a text to an image is very simple and can be done in two ways.

- Select the Type tool from the Tool panel and click in the image where you would like the type to appear. A flashing cursor will appear and you can commence typing.
- If with to create a column of text for a magazine layout, choose the Type tool, but instead of just clicking, click and drag to create the text box. Now when you type, it will be contained within the box.

You will notice that when you type a new type layer appears in the Layers panel so there is no need to manually create a new layer when you wish to add text. We will take a look at more advanced text functions and formatting in subsequent books.

Shape Layers

When you choose one of the Shape tools, fig 5.8, the default setting in the associated Options bar is to create what is known as a Shape layer. In the same manner as the Type tool, Shapes layers are created automatically when you start to draw with one of the tools, provided that the Create Shape Layer icon is selected in the Options bar – the first selected icon from the left in fig 5.9.



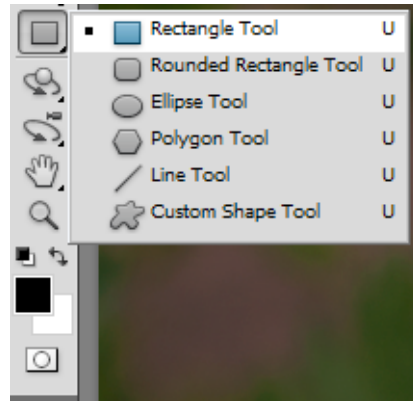


Fig 5.8 the various Shape tools available.



Fig 5.9 the default Shape options – to create Shape Layers.

Shape layers consist of a solid colour layer with a vector mask, fig 5.10. A vector mask is like a stencil, only allowing the colour to be seen where the shape has been drawn. The colour of a shape can be changed at a time by double clicking on the coloured thumbnail icon in the layers panel. The icon will reflect the currently chosen colour. As you double click the Colour Picker dialogue box will appear, fig 5.11, allowing you to choose any colour you wish.

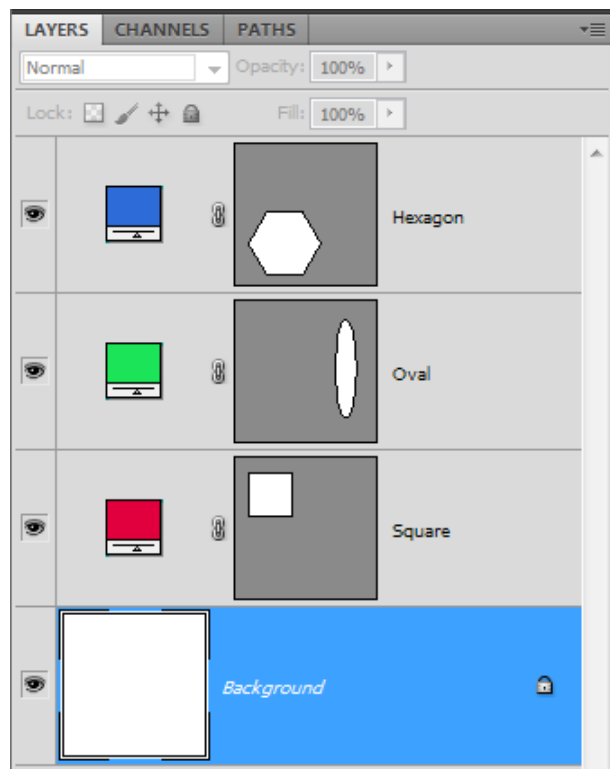


Fig 5.10 Shape layers created using the shape tools

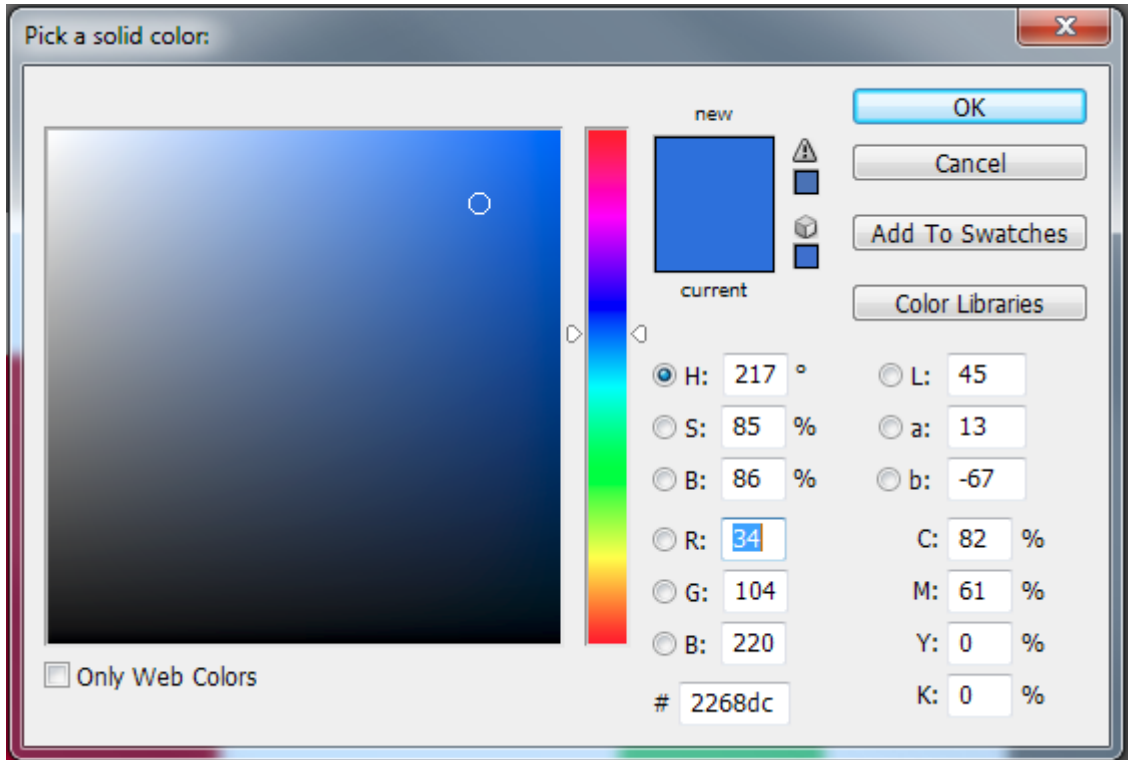


Fig 5.11 the Colour Picker – use the slider on the right to choose a colour and then click inside the main box to specify the saturation and luminance values for that colour.

Please click the advert

Is your recruitment website still missing a piece?

Bookboon can optimize your current traffic. By offering our free eBooks in your look and feel, we build a qualitative database of potential candidates.



Contact us to hear more
kbm@bookboon.com



CREDIT SUISSE

DAIMLER



Microsoft

bookboon.com

Download free ebooks at bookboon.com

6 Simple Selections

Selections allow us to isolate a particular portion of the layer. We can then edit the selected region without affect the rest of the layer. There are many ways in which we can generate a selection in Photoshop. In this book we will start by taking a look at some of the simple selection tools.



The Magic Wand Tool

The Magic Wand tool is located fourth from the top in the Tools panels and is stacked with the Quick Selection tool. To access a stacked tool, simply click and hold on a particular tool to see the other tools available in that location. Stacked tools are indicated by the small black triangle in the bottom right hand corner of the icon.

The Options bar functions associated with the Magic Wand tool play an important role in its functionality, fig 6.1.

- Tolerance: determines how much of the image is selected when you click on a particular part of your image. A value of 10 indicates that 5 darker values and 5 lighter values will be chosen based on the position where you clicked, fig 6.2.
- Anti-alias: make selection edges smoother.
- Contiguous: when this option is selected only neighbouring pixels are selected, fig 6.2. When unchecked all pixels of the chosen Tolerance value will be selected, fig 6.3.
- Sample All Layers: if chosen, will take all layers into consideration and not just the highlighted layer.

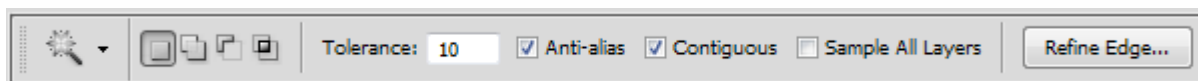


Fig 6.1 the Magic Wand tool options

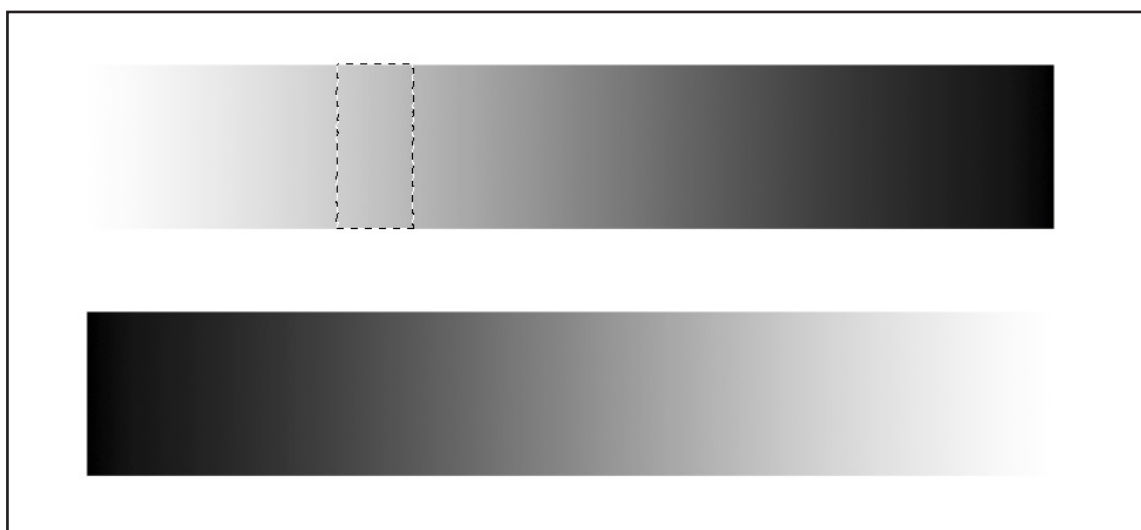


Fig 6.2 a Contiguous selection with a Tolerance of 10

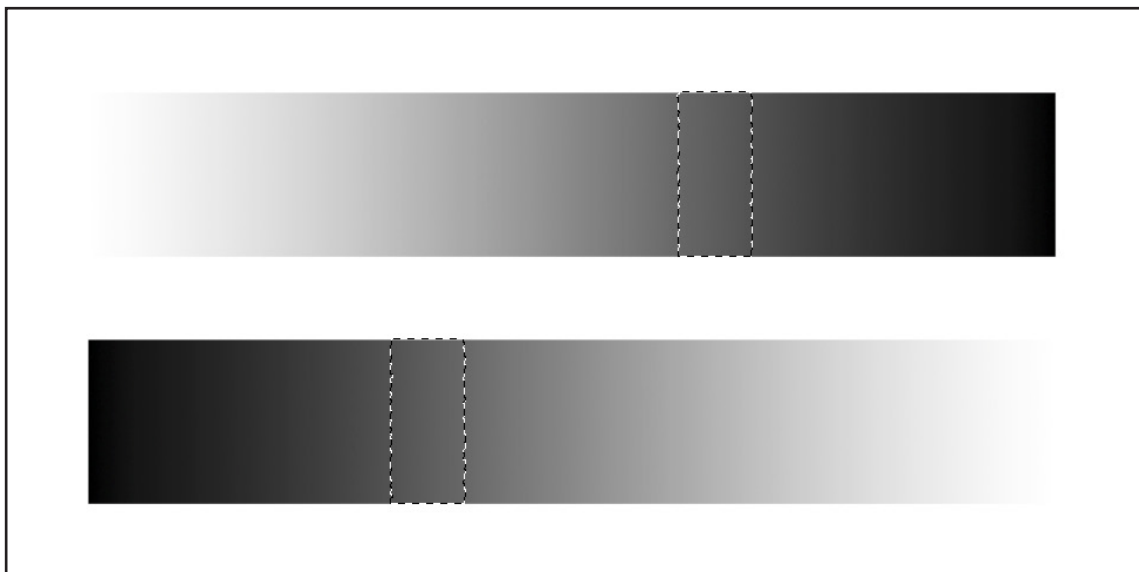


Fig 6.3 a Non-Contiguous selection, the same values are select in both gradients.

There are other icons in the Magic Wands Options that allow us to make more accurate selections.



Create a new selection



Add to an existing selection



Subtract from an existing selection



Select the intersection between two selections

In the following example we will look at making a selective edit to an image. In fig 6.4, the orange poppy was selected with the magic wand tool so that we can change the colour of the flower without affect the rest of the image. The poppy contains a surprising amount of different tones so it's very difficult to make an accurate selection. If you keep increasing the tolerance value you will get to a point where areas outside of the poppy start to become selected. We don't want this, so a better solution for an image like this, is to keep the tolerance value relatively low (in this example, I used a value of 20) and chose the Add to Selection icon in the Options bar. You can then keep clicking various parts of the flower until you are happy with the selection. If you still manage to have unwanted selection areas appear, click on the Subtract from Selection icon to remove those values from the selection (note: take care not to leave this icon selected once you've removed the unwanted selection areas).



Fig 6.4 selecting the flower for editing

Turning a challenge into a learning curve.
Just another day at the office for a high performer.

Accenture Boot Camp – your toughest test yet

Choose Accenture for a career where the variety of opportunities and challenges allows you to make a difference every day. A place where you can develop your potential and grow professionally, working alongside talented colleagues. The only place where you can learn from our unrivalled experience, while helping our global clients achieve high performance. If this is your idea of a typical working day, then Accenture is the place to be.

It all starts at Boot Camp. It's 48 hours that will stimulate your mind and enhance your career prospects. You'll spend time with other students, top Accenture Consultants and special guests. An inspirational two days

packed with intellectual challenges and activities designed to let you discover what it really means to be a high performer in business. We can't tell you everything about Boot Camp, but expect a fast-paced, exhilarating

and intense learning experience. It could be your toughest test yet, which is exactly what will make it your biggest opportunity.

Find out more and apply online.

Visit accenture.com/bootcamp

• Consulting • Technology • Outsourcing


High performance. Delivered.

Please click the advert

Once the selection is complete you can go to the Image menu>Adjustments>Hue/Saturation. The values that I chose to use can be seen in fig 6.5.

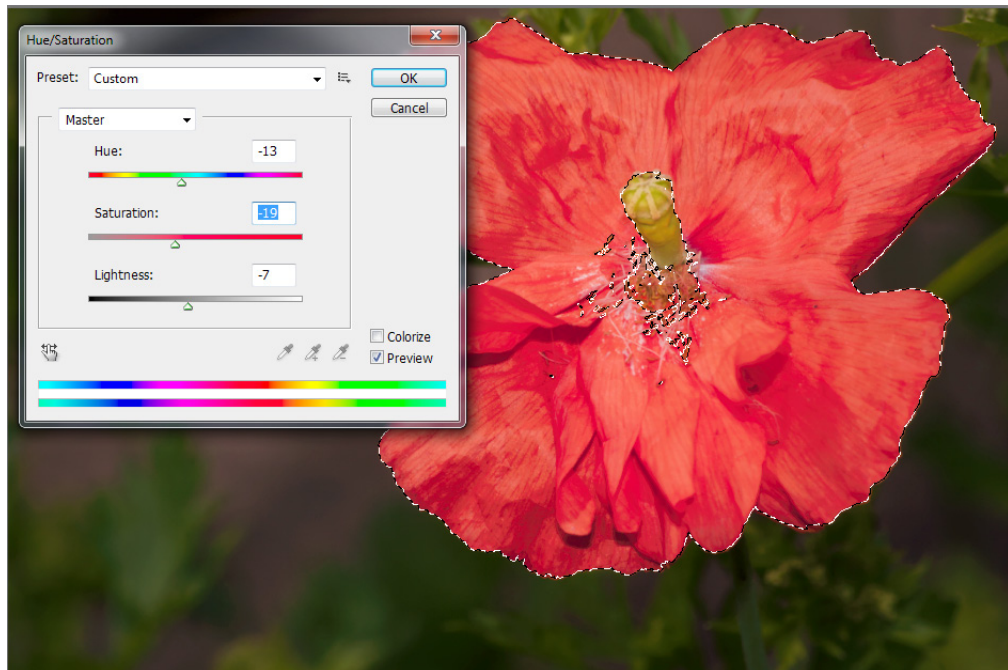


Fig 6.5 the Hue/Saturation adjustments are only applied to the selected area.

Not only can you apply Adjustments to selected areas, you can also apply filters from the Filter Menu. In fig 6.6 you can see that the Filters>Artistic>Plastic Wrap filter has been applied to the same selection



Fig 6.6 the selection was used to apply the Plastic Wrap filter

Selections can be saved and loaded from the Select menu, fig 6.7. If you've taken the time to make a selection, it is a good idea to save it in case you decide to make further edits. Once you've finished with your selection you can remove it by choosing Deselect from the Select menu.

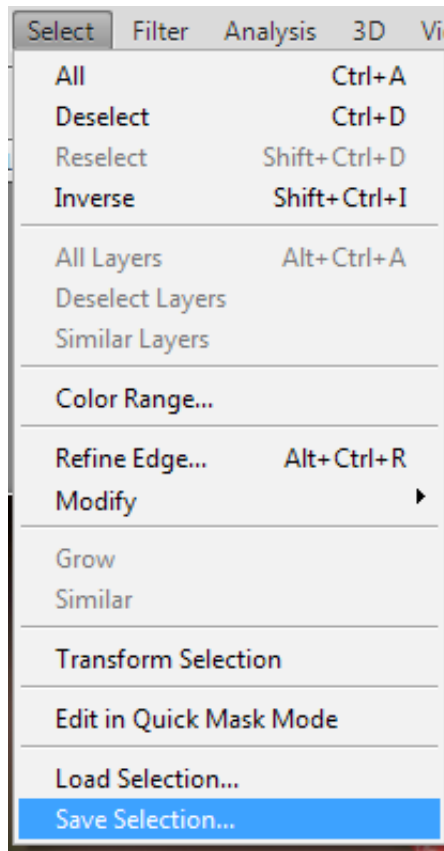


Fig 6.7 the Select menu

The Marquee Tools

The Marquee tools allow us to draw basic shapes with selections, fig 6.8. As with the Magic Wand tool, the selection can then be used to edit the image.

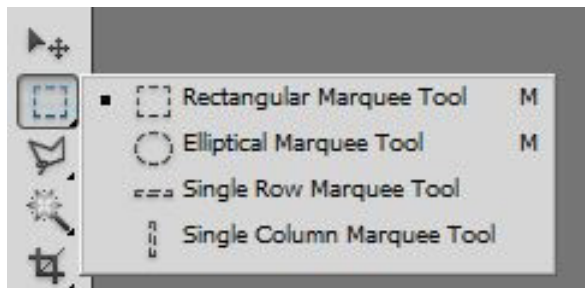


Fig 6.8 the Marquee selection tools

The Options bar for the Marquee tools is very similar in appearance to that of the Magic Wand tool. However, you will notice that you also have an option called Feather. By default, the Marquee tools will define a hard edged selection. However, by entering a pixel value in to the Feather option we can create a selection that will have a soft edge. Soft feathered selections can be very useful as they allow us to blend edits with underlying layers, fig 6.9.

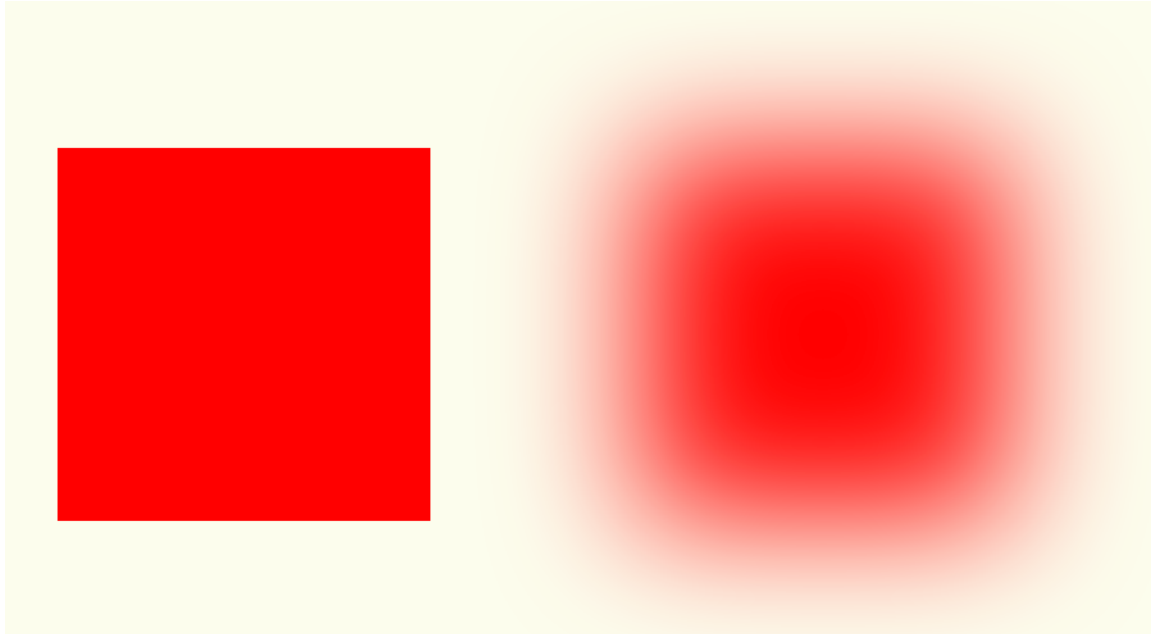


Fig 6.9 a hard edged selection and a feathered selection filled with the foreground colour

Please click the advert

The Wake
the only emission we want to leave behind

Low-speed Engines Medium-speed Engines Turbochargers Propellers Propulsion Packages PrimeServ

The design of eco-friendly marine power and propulsion solutions is crucial for MAN Diesel & Turbo. Power competencies are offered with the world's largest engine programme – having outputs spanning from 450 to 87,220 kW per engine. Get up front!
Find out more at www.mandieselturbo.com

Engineering the Future – since 1758.
MAN Diesel & Turbo

As well as being able to edit the content of a selection on a layer that contains an image or design, we can also create a new empty layer and use the active selection to:

- Fill with a colour (fig 6.10)
- Stroke with an outline (fig 6.10)
- Paint or Clone inside (fig 6.10)
- Apply an Adjustment or Filter to the selected area (as was saw with the Magic Wand tool, fig 6.6 and 6.7)

The Fill and Stroke commands can be found in the Edit menu, fig 6.12.

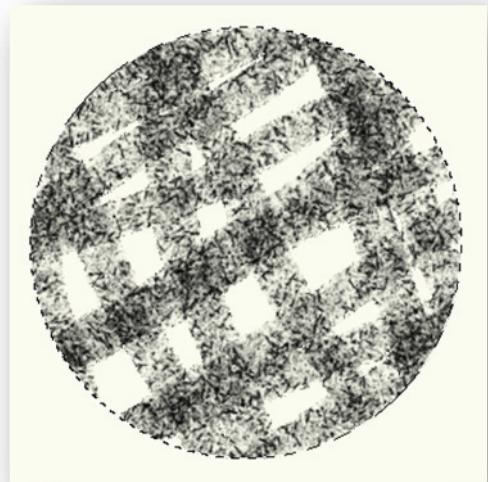
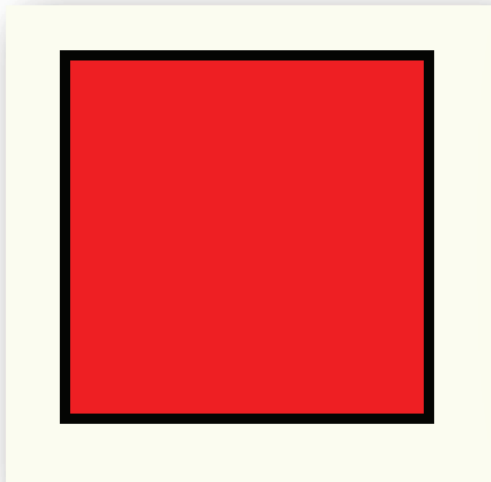


Fig 6.10 the square selection has had a red Fill and a black Stroke applied and the circular selection has been used to contain brush strokes created using the Brush tool.

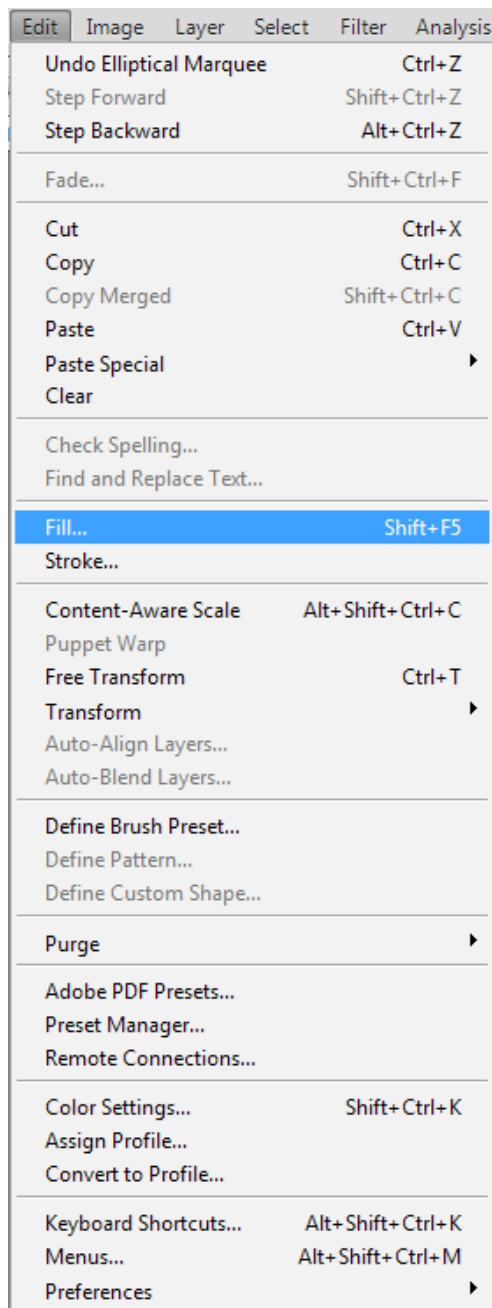


Fig 6.12 the Fill and Stroke commands in the Edit menu

Marquee Selection Modifier Keys

When drawing a selection using the Marquee tools there are a number of keys on the keyboard that will alter how the selection is drawn.

- Shift key – constrains the Rectangular and Elliptical Marquee tools to a perfect square or circle respectively.
- Alt key – draws a selection from the centre instead of the edge.
- Space bar – allows the selection to be moved during the drawing process.

- Shift key (after the selection is drawn) – temporarily chooses the Add to Selection option.
- Alt key (after the selection is drawn) – temporarily chooses the Subtract from Selection option.
- Shift and Alt - temporarily chooses the Intersect with Selection option.

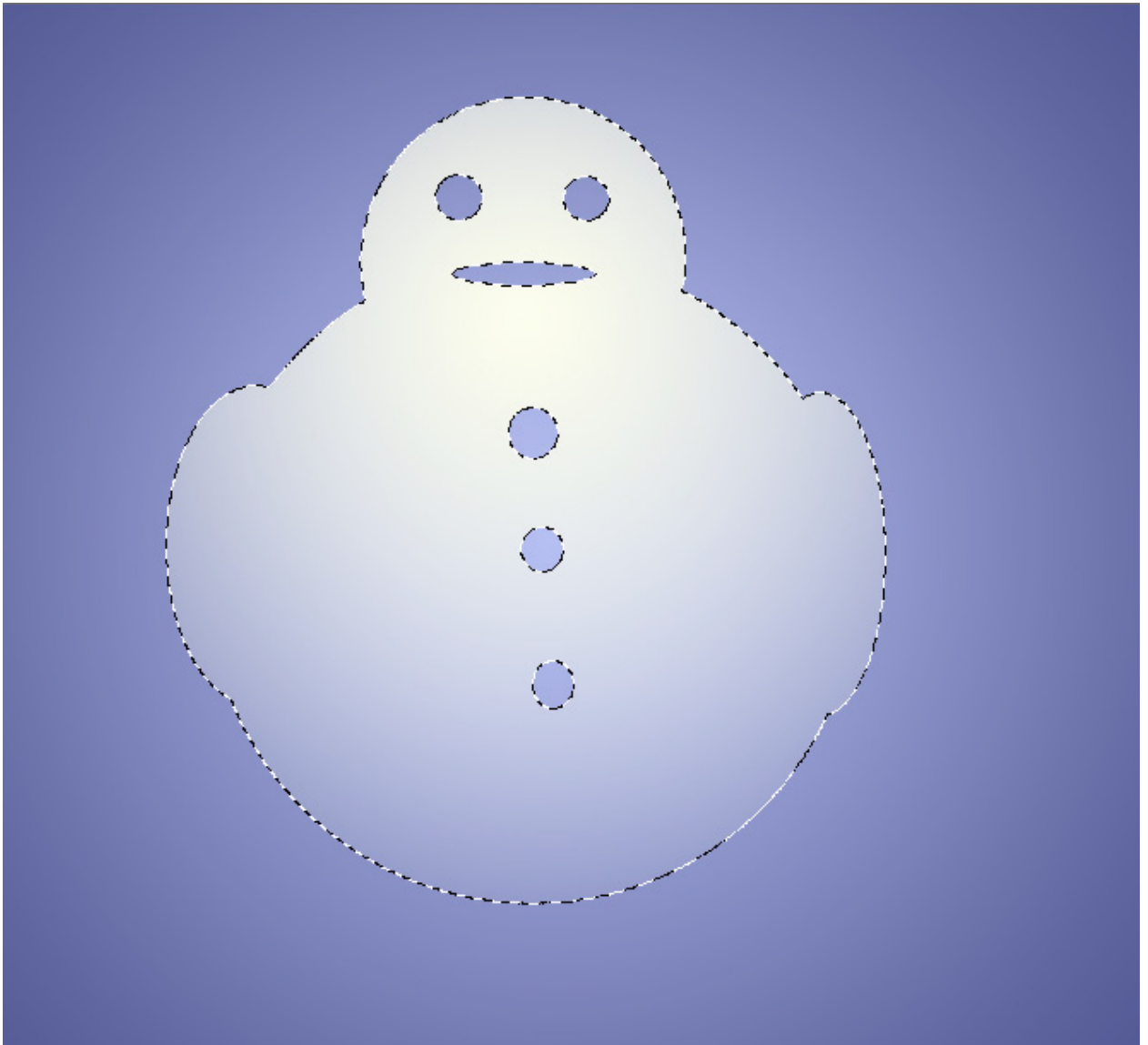


Fig 6.13 the “Add to Selection” and “Subtract from Selection” options have been used create a more complex selection shape. The selection was then filled with a gradient using the Gradient tool.

The Lasso Tools

Another set of selection tools are the Lasso tools, fig 6.14. These tools are used to create more of a free-hand drawn selection.

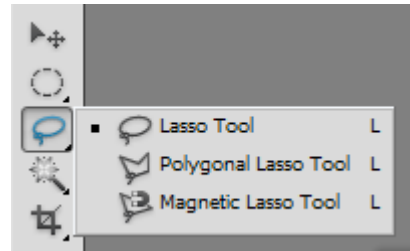


Fig 6.14 the Lasso tools

The Lasso tools comprise of:

- The Lasso tool – a completely hand drawn selection.
- The Polygonal Lasso tool – draws straight lines between clicked points.
- The Magnetic Lasso tool – used for drawing selections around image contents by detecting contrast changes around the edge of the subject.

Copying a Selected Item to a New Layer

The act of copying a selected item to a new layer is a crucial editing technique in Photoshop. It allows you to work non-destructively, by applying edits to a new layer instead of the original pixels that are located in the Background layer. It also allows you to duplicate items to create composite images (fig 6.15) or complex designs.

Please click the advert

Brain power

By 2020, wind could provide one-tenth of our planet's electricity needs. Already today, SKF's innovative know-how is crucial to running a large proportion of the world's wind turbines.

Up to 25 % of the generating costs relate to maintenance. These can be reduced dramatically thanks to our systems for on-line condition monitoring and automatic lubrication. We help make it more economical to create cleaner, cheaper energy out of thin air.

By sharing our experience, expertise, and creativity, industries can boost performance beyond expectations. Therefore we need the best employees who can meet this challenge!

The Power of Knowledge Engineering

Plug into The Power of Knowledge Engineering.
Visit us at www.skf.com/knowledge

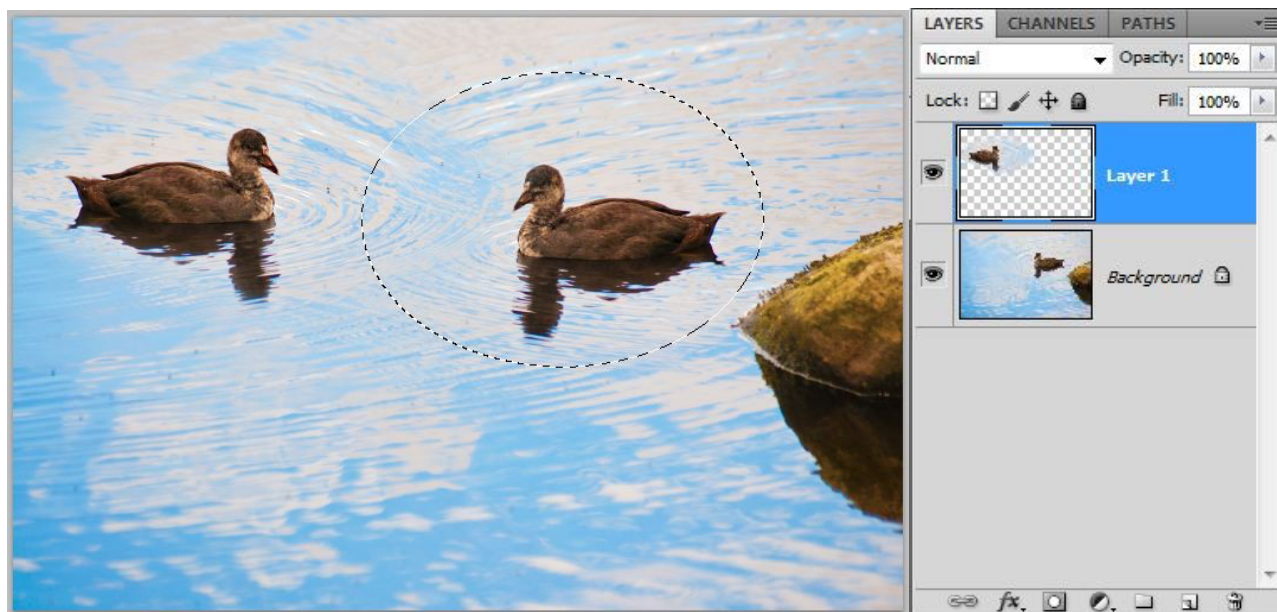


Fig 6.15 the bird has been selected and copied to a new layer, as indicated by the layers panel on the right.

There are a number of ways to copy an item to a new layer. Once you've made your selection, go to Layer menu and choose New>Layer Via Copy. Alternatively, you can use one of the most useful keyboard shortcuts in Photo shop to do the same task – Ctrl J. When you make the new layer it will appear as if nothing has changed, this is because the duplicate item will be in perfect register with the original image below. Select the Move tool (the first tool in the tool bar) and reposition the item as required. If you are using an image as in fig 6.15, a large feathered selection will help the new layer blend more effectively with the one below for a more seamless result.

It is often the case that you will wish the copies item to be of a different size or orientation to the original, fig 6.16 . This can be achieved by going to the Edit menu and choosing one of the Transform commands (covered in depth in book 2 of this series). In fig 6.16 the item has been scaled down slightly and flipped horizontally, so that it appears to be a little further away and swimming in the opposite direction. Once you've made your Transform edits, you must click on the tick in the Options bar in order to accept the changes (if you don't like what you've done, click on the X to cancel the edits).

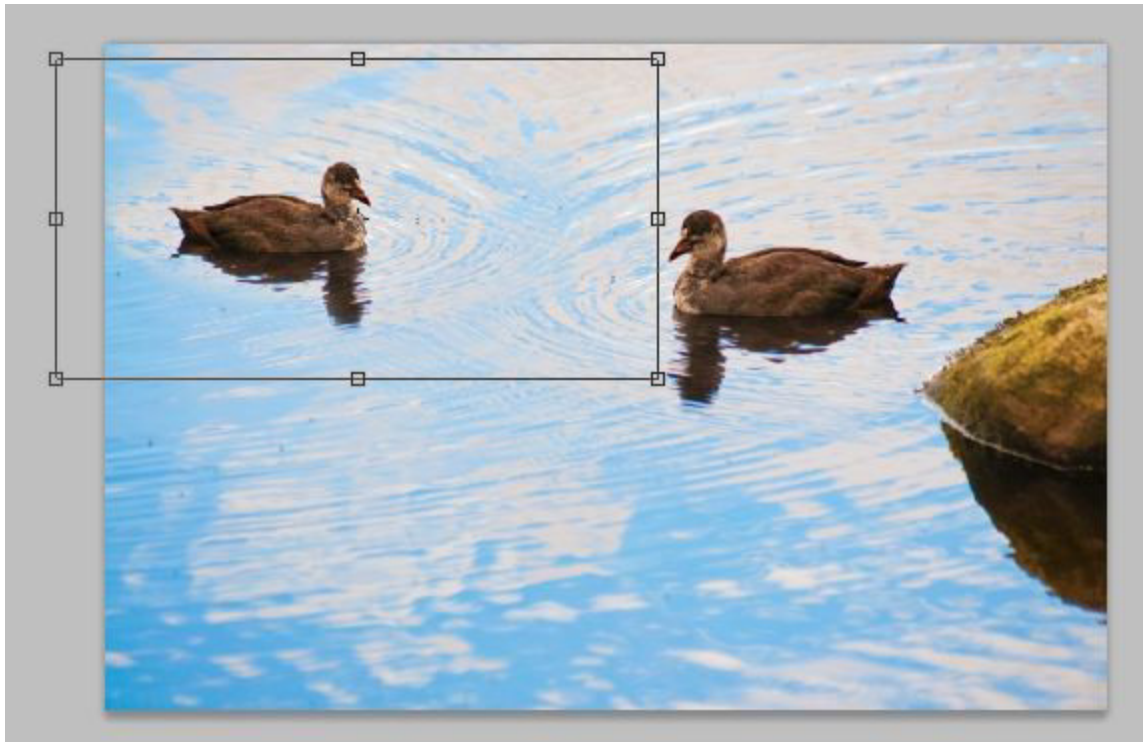
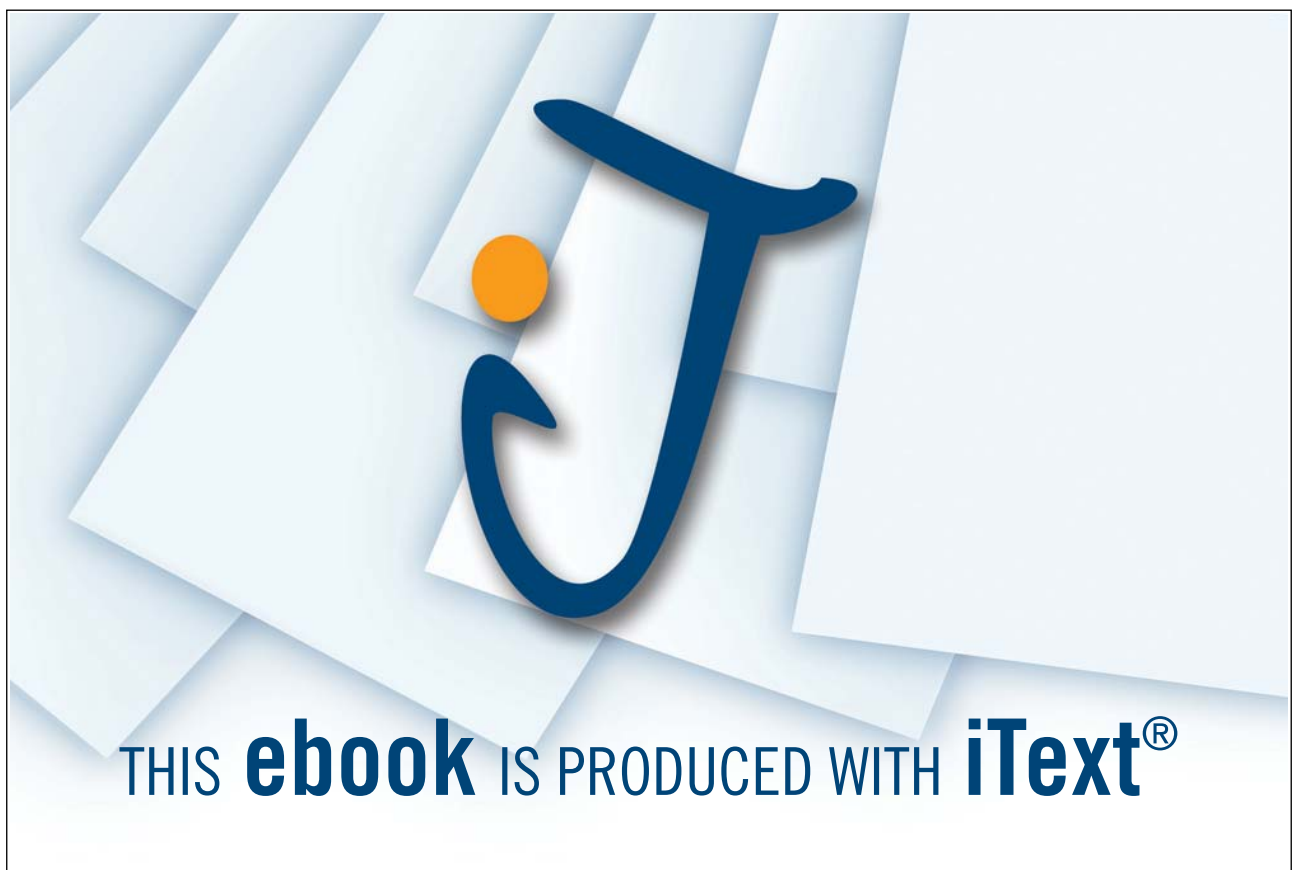


Fig 6.16 the bird has been edited using the transform commands found in the edit menu

Please click the advert



7 Choosing Colours

The Foreground and Background colours

At the bottom of the Tools panel there are two colour chips that represent the colours that are currently selected. There are commonly known as the foreground and background colours. The foreground colour is the colour currently in use by a specific tool and is represented as the top colour chip in the tools panel. In fig 7.1 we can see that the foreground colour is set to blue and the background colour is set to red. The reason for having a background colour is that it can be switched for the foreground colour very quickly by clicking on the double headed arrow icon (fig 7.1). The background colour can also be used in gradients – in this case drawing a gradient with the gradient tool will result in a blue to red gradient being drawn (using the default gradient settings)



Fig 7.1 the foreground and background colour chips, the switch foreground and background icon and the default colours icon.

The black and white icon in fig 7.1 will return the colours to their default setting of black as the foreground and white as the background.

Changing the Colours

You can change the selected colours by simply clicking on either the foreground or background colour chips at the bottom of the Tools panel. This will result in the Color Picker dialogue box appearing, fig 7.2.

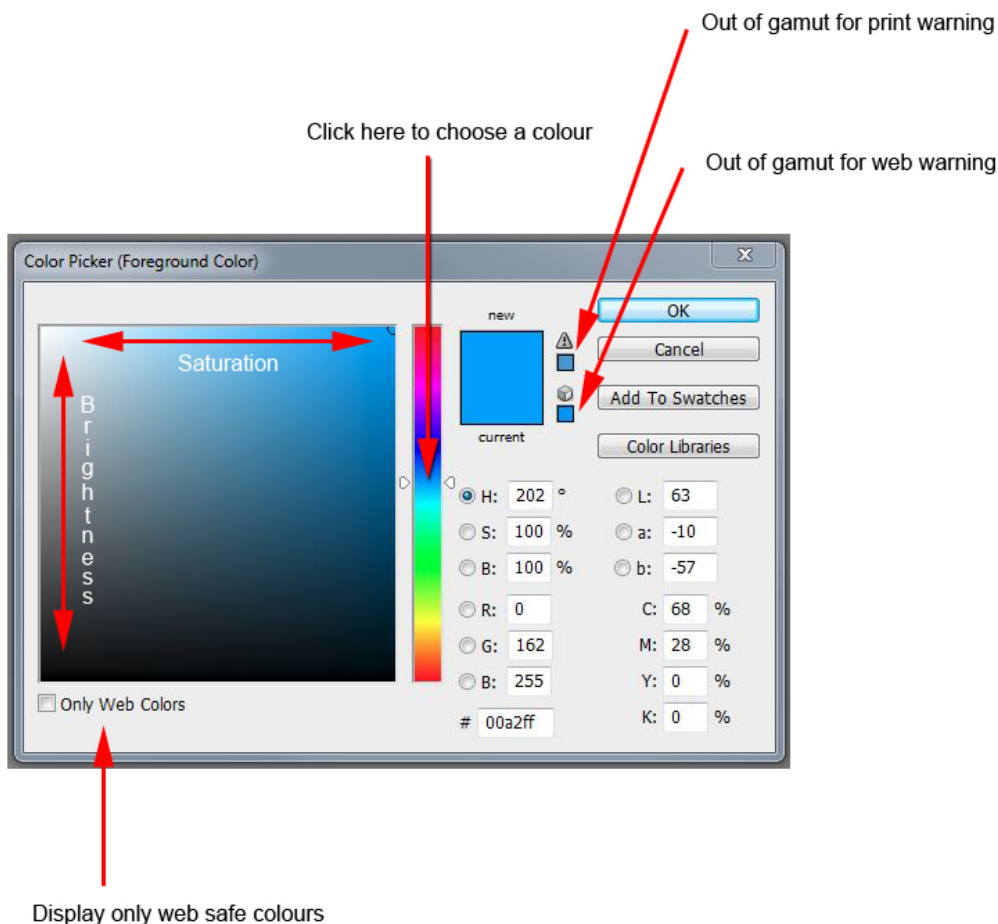


Fig 7.2 the Color Picker

Click in the multi-coloured area to choose your colour. The brightness of the colour can be adjusted by clicking higher or lower in the large area on the left dialogue box, which represents variations of the chosen colour with respect to brightness and saturation. Saturation of the colour is increased by clicking further to the right of this area.

If your color picker dialogue box does not look like the one in fig 7.2, there could be reasons for this. Firstly, the operating system colour picker has selected in the General Preferences, found in the Edit menu. If this is the case, you can change it to the Adobe version if you wish. The colours represented in the Adobe Color Picker may also appear different. The “Only Web Colors” box may be ticked or an alternative colour mode chosen. To have the dialogue box appear as in fig 7.2 make sure that the Only Web Colors box is not checked and that the HSB (Hue, Saturation, Brightness) colour option is selected.

There are two small warning boxes that may appear to the right of the new/current box. The top one indicates an out of gamut for printing warning, which means that it’s outside the range of colours that the printer can reproduce correctly. The lower one is warning that the colour may not be displayed correctly if viewed in a web browser. If you click on either one of warning icons, it will alter chosen colour to make it print and/or web safe.

The Swatches Panel

The Swatches panel contains a number of useful preset colours, fig 7.3. If your Swatches panel is not visible in your current workspace you can access it by choosing Swatches in the Window menu.

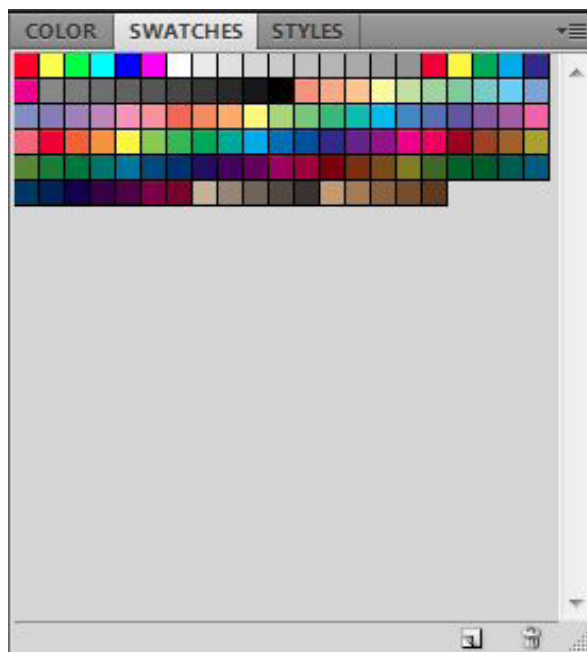


Fig 7.3 the Swatches panel

Additional swatches are available from the flyout menu in the top right hand corner of the panel, fig 7.4. You can also create your own swatches by:

- Click on the turning page icon at the bottom of the Swatches panel to add the current foreground colour to the list.
- Click on the “Add to Swatches” button in the Color Picker dialogue box.
- Click on an empty space in the Swatches panel to add the current foreground colour to the list.

Swatches are extremely useful for graphic and web designers because you can create your own set of custom colours from a layout or web page. You can then save that set of colours from the Swatches panel flyout menu, fig 7.4. They be quickly loaded (from the flyout menu) the next time that you are required to create a design for a particular client and need the colour palette that was used in a previous design.

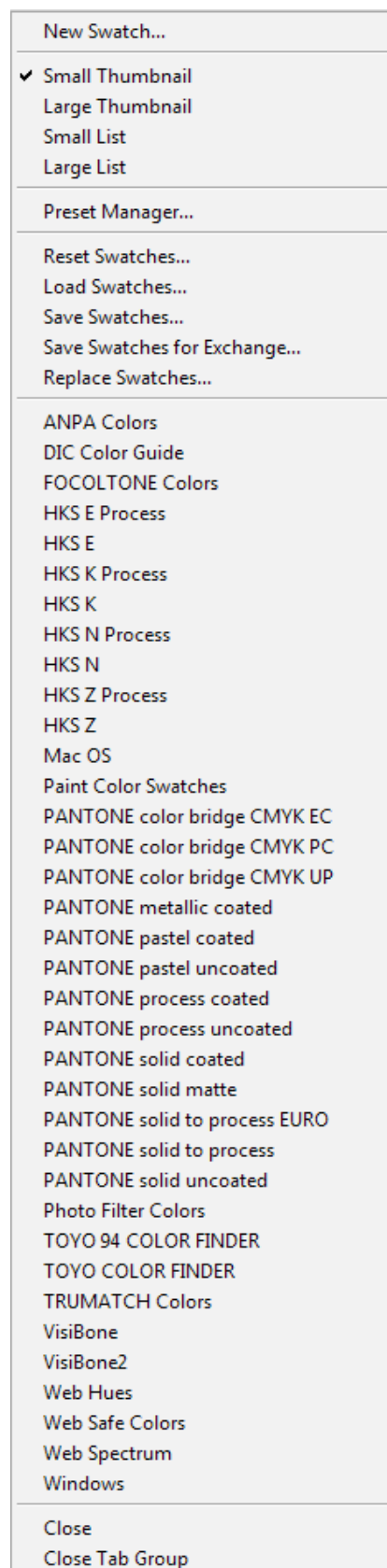


Fig 7.4 the Swatches Flyout menu

The Color Panel

You can create a foreground or background colour from the Color panel, fig 7.5.

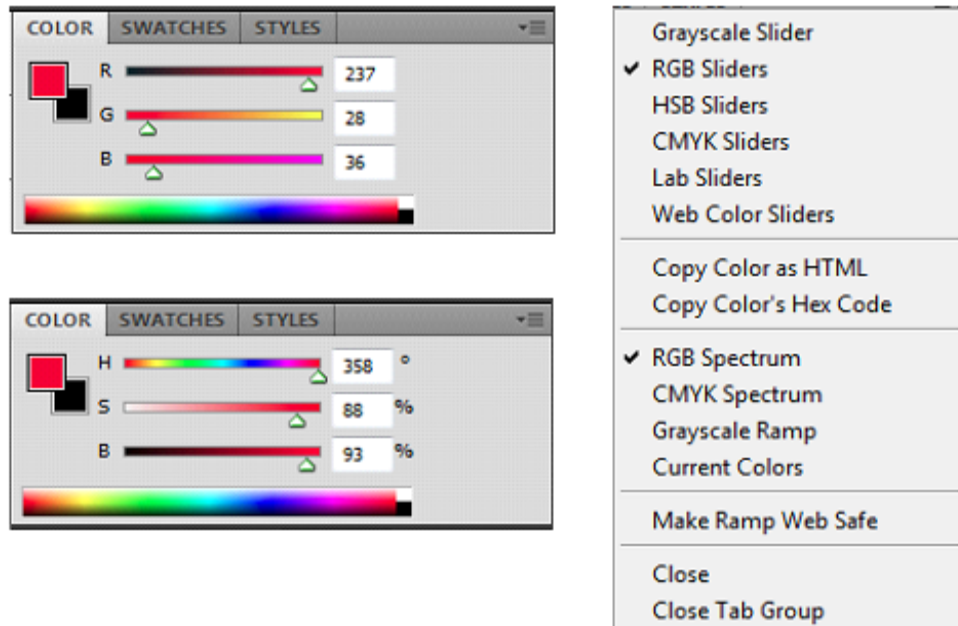


Fig 7.5 the Color panel HSB and RGB sliders and the flyout menu.

Please click the advert

360°
thinking.

Deloitte.

Discover the truth at www.deloitte.ca/careers

© Deloitte & Touche LLP and affiliated entities.

The colours are changed by either moving the sliders or by clicking directly on the spectrum. Both the sliders and the spectrum are configurable to accommodate working in the most popular colour spaces. The most useful setup for this panel, is to have the sliders set to HSB and the colour spectrum set to RGB. If you create a colour that is out of the gamut for you printer, a warning icon will appear, fig 7.6. If you click on the icon, the colour will automatically be change to the nearest in gamut colour.

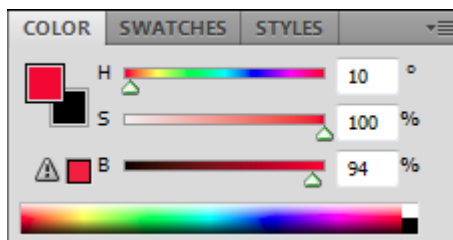


Fig 7.6 the Color panel showing an out of print gamut warning

If you are a web designer, you can choose the “Web Color Sliders” and “Make Ramp Web Safe” options from the flyout menu, fig7.5. The Color panel will then appear as in fig 7.7 and the out of print gamut warning will become a non-web safe colour warning.

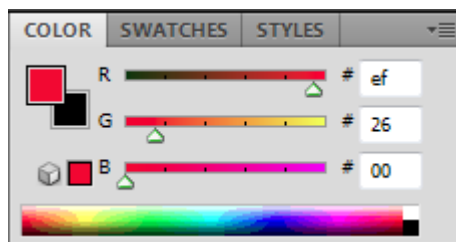


Fig 7.7 the Color panel set up for web design.

8 Guides and Rulers

Designers of all types will find using guides and rulers a great help in laying out pages for the web or for print. The options for turning on and off ruler and guide functions can be found in the View menu, fig 8.1.

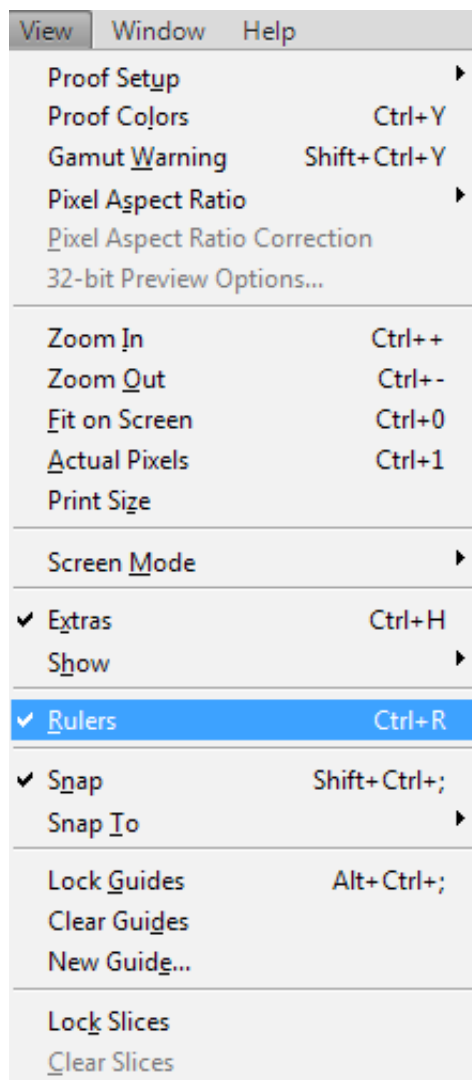


Fig 8.1 the View menu.

To have the Rulers appear around the outside of your work area, select Rulers from the View menu, or use the keyboard shortcut (the keyboard shortcut for commonly used functions are indicated to the right of the menu item), Cmd/Ctrl + R (Mac/PC).

You can create guides by clicking on the New Guide option in the View menu. However, it is far quicker and easier to simply click and drag from inside one of the rulers to create a guide. Clicking and dragging from the vertical ruler will create a new vertical guide and performing the same procedure from the horizontal ruler will result in a horizontal guide.

Once your guides have been created, you can change or refine your layout by selecting the move tool and repositioning the guides. To do this you must select the move tool and place the cursor over the guide that you wish to move. When the cursor changes, you can then move the guide.



Fig 8.2 the Move tool

You will notice that the guides are cyan in colour by default. This can be changed if you wish by changing the colour setting in the Preferences. The Preferences are found in the Edit menu and the guide settings are found in the sub category “Guides, Grid, & Slices”. I find it easier to fill my background layer with a dark neutral colour so that I can see the guides more clearly when preparing a layout, fig 8.3. You can do this by selecting the required colour as your foreground colour and then use the Paint Bucket tool, fig 8.4 (grouped with the Gradient tool), to click on the background layer to apply the colour. It can be returned to white (or whatever colour you like) by repeating the process once your guides are in place.

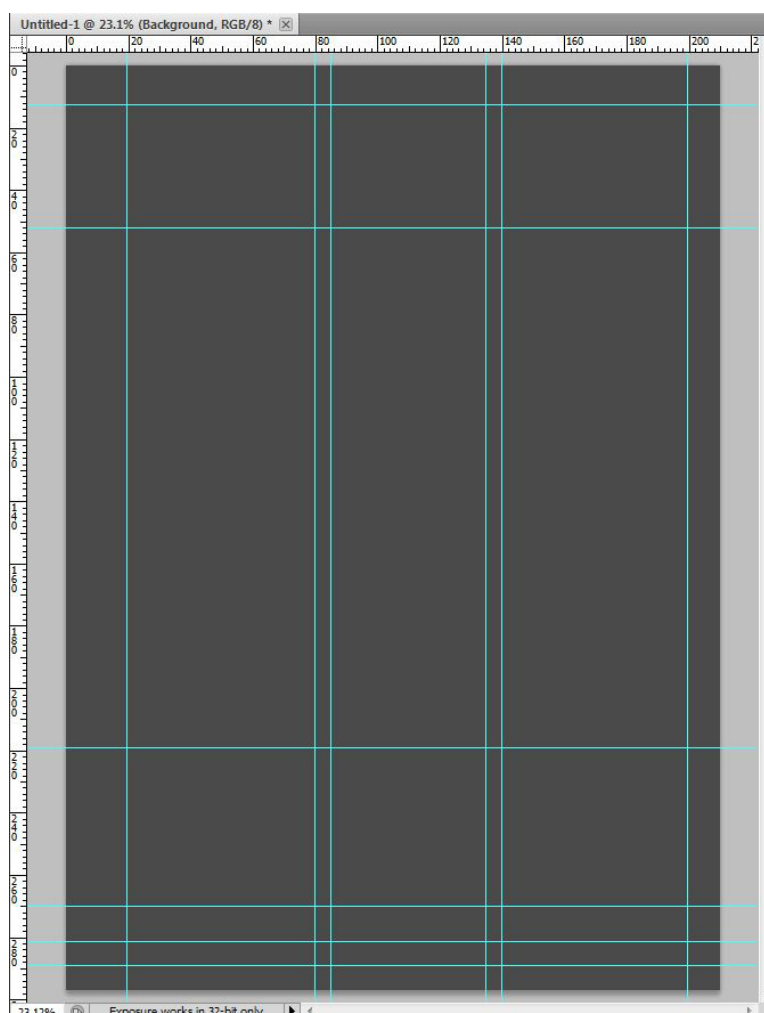


Fig 8.3 temporarily darken your background to better judge your guide placement

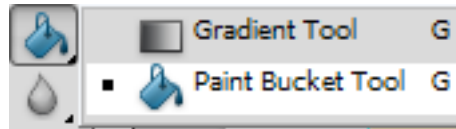


Fig 8.4 the Paint Bucket tool

If you wish to change the units displayed on the Rulers, you change the “Units and Rulers” setting in the Preferences. Alternatively, you can right click in the ruler and select you alternative units from the box that appears fig 8.5.

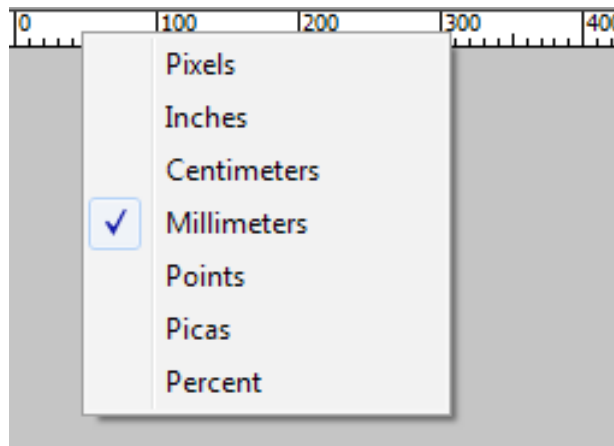


Fig 8.5 changing the units by right-clicking on the ruler.

Please click the advert

An advertisement for Maastricht School of Management (MSM) Executive Education. At the top left is a logo featuring a world map with circuit lines. To its right is the MSM logo, with 'M' and 'M' in a serif font and a stylized 'S' in a circle between them. Below this is the text 'MAASTRICHT SCHOOL OF MANAGEMENT'. A green banner with a pattern of white circles contains the text 'Increase your impact with MSM Executive Education'. Below the banner is a collage of photos showing diverse people in professional settings. The main text of the ad reads: 'For almost 60 years Maastricht School of Management has been enhancing the management capacity of professionals and organizations around the world through state-of-the-art management education. Our broad range of Open Enrollment Executive Programs offers you a unique interactive, stimulating and multicultural learning experience. Be prepared for tomorrow’s management challenges and apply today. For more information, visit www.msm.nl or contact us at +31 43 38 70 808 or via admissions@msm.nl'. At the bottom, a brown banner contains the text 'the globally networked management school'.

You can create a layout mock up by using the Vector Shape tools (fig 8.6) to draw shapes to represent where specific items will appear in your layout, fig 8.7. Drawing with Vector Shapes has many similarities to using the Selection Marquee tools. The modifier keys for adding and subtracting from shapes are the same as for creating selections (Shift to add, Alt/Option to subtract).

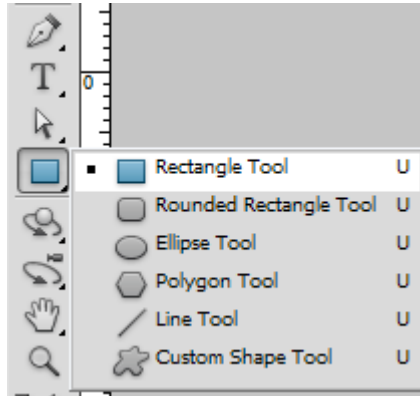


Fig 8.6 the Vector Shape tools

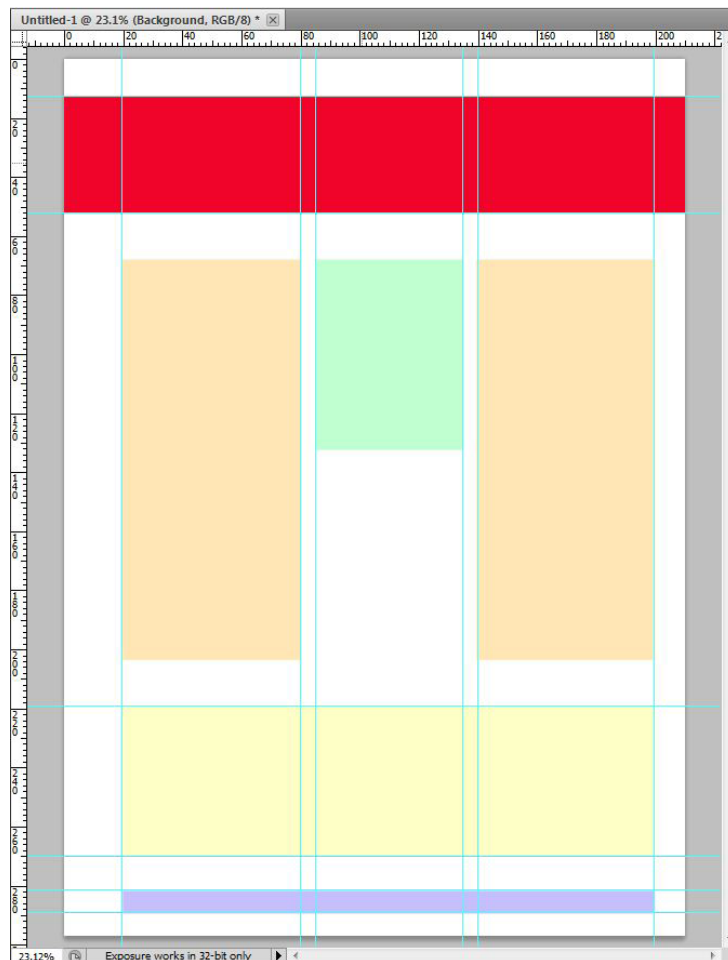


Fig 8.7 layout items represented by Vector Shapes

Whilst drawing a layout, it is useful to utilise the Snap setting in the View menu, fig 8.1. This will cause the drawing tools to snap precisely to the guides as you are dragging out the shapes.

Once your design is complete you may wish to view it without the guides. However, if you use the Clear Guides option from the View menu, the guides will be gone for good. A better way to work is to Hide the guides. This can be done from the Show options in the View menu or by simply pressing Cmd/Ctrl + ; (Mac/PC) to toggle the guides on and off.

Your guides will be saved with your document, but they will not appear in a print or an exported web slice.

Please click the advert

See the light!
The sooner you realize we are right,
the sooner your life will get better!

A bit over the top? Yes we know!
We are just that sure that we can make your media activities more effective.

Get "Bookboon's Free Media Advice"
Email kbm@bookboon.com

bp CREDIT SUISSE DAIMLER Unilever Microsoft bookboon.com

9 History

If you make a mistake in Photoshop you can undo that mistake by going to the edit menu and choosing either Undo or Step Backward. Clicking Undo will take you back a single step, the command will then change to Redo (followed by the name of the action that you have just performed). Selecting the Step Backward option take you once set backwards in the History panel, fig 9.1. The History panel can be opened from the Window menu and contains a record of operations performed up to a finite number. The number of steps visible in the History panel are set in the Performance section of the Preferences, fig 9.2. The Preferences are found in the Edit menu.

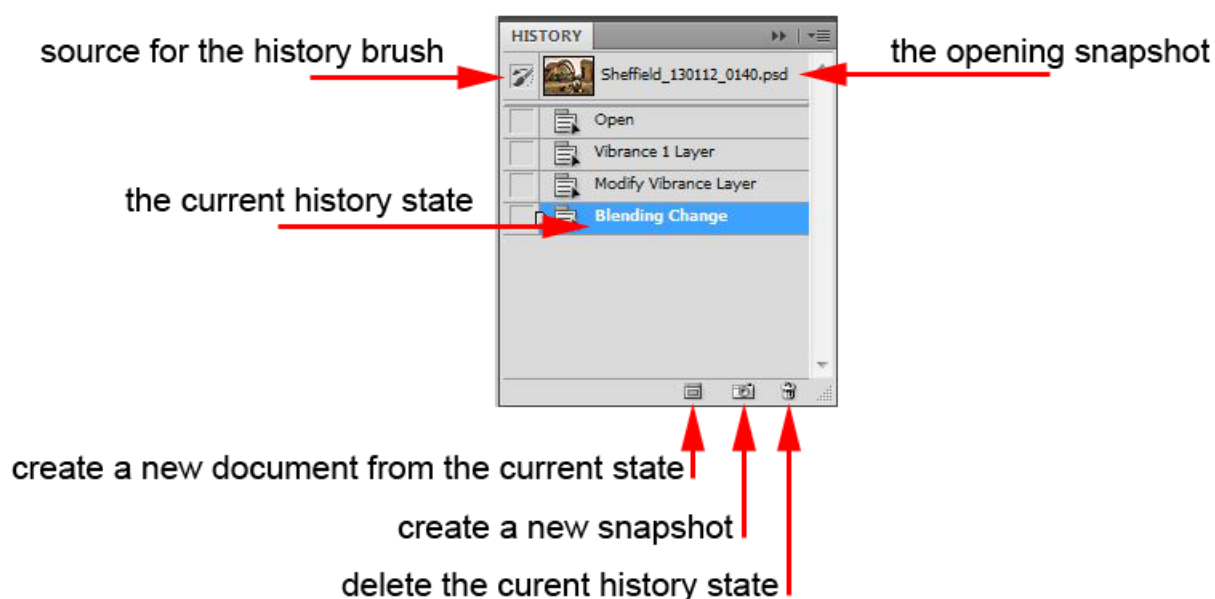


Fig 9.1 the History panel

The default number of History states is 20, fig 9.2. The minimum value for History states is 1 and the maximum value is 1000. It is very tempting to set a high number of History states. However, this will have serious consequences with respect to performance of your computer as Photoshop has to remember the exact configuration of your document in each of the History states. I recommend 20-30 History states for a beginner. When you become more experienced at using Photoshop try reducing the number of History states to 8-12. This will free up some of your computer resources so that it performs other functions faster. I also recommend setting the History states to a low value if you are trying to run Photoshop on a minimum specification machine.

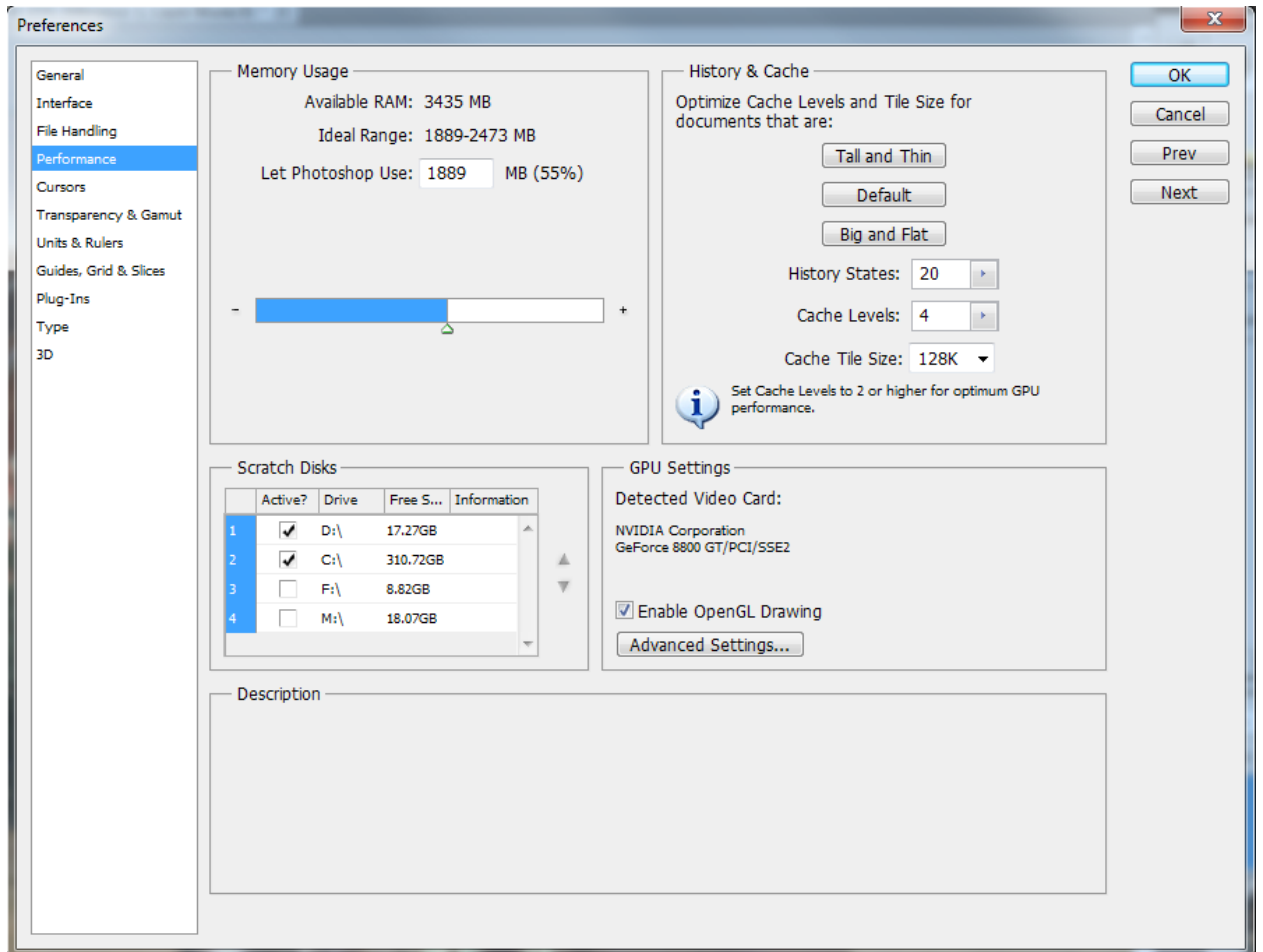


Fig 9.2 set the number of History states in the Performance section of the Preferences.

Snapshots

When you create or open a document, an initial Snapshot is created. This Snapshot appears at the top of the History panel and is the default source for the History brush, fig 9.1. If you make many edits to your document and make a mess of things, you can always return the document to its original state by clicking on this Snapshot.

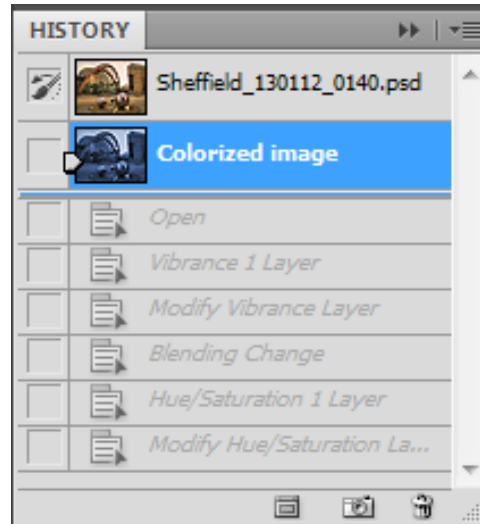


Fig 9.3 create a new Snapshot by clicking on the camera icon at the bottom of the History panel.

If you are making several edits to your document and are about to run out of History states you can click on the camera shaped icon at the bottom of the History panel in order to create another Snapshot. The new Snapshot will remember all of the edits that you have created to that point, fig 9.3. You can then proceed with your edits, knowing that if you make a mistake, you can click on the new snapshot and don't have to start all the way from the beginning again. It's a good idea to rename any new Snapshots that you make by assigning them a descriptive name. To rename a Snapshot, double click on Snapshot name and type in the new name.

Please click the advert

I WANT TO CHANGE DIRECTION,
AND THE WORLD.

GOT-THE-ENERGY-TO-LEAD.COM

We believe that energy suppliers should be renewable, too. We are therefore looking for enthusiastic new colleagues with plenty of ideas who want to join RWE in changing the world. Visit us online to find out what we are offering and how we are working together to ensure the energy of the future.

RWE
The energy to lead

An alternative to working with Snapshots is to create an entirely new document from a History state. You can do this by clicking on the icon shown in fig 9.4.



Fig 9.4 create a new document from the current History state.

A new document created from a History state will have that state as its opening Snapshot and the History for that document will be empty.

Keyboard shortcuts:

Action	Keyboard Shortcut (Mac and PC)
Undo	Cmd/Ctrl + Z (Mac/PC)
Redo	Cmd/Ctrl + Z (Mac/PC)
Step Backward (in History states)	Cmd + Option/Ctrl + Alt + Z (Mac/PC)
Step Forward (in History states)	Cmd + Shift/Ctrl + Shift + Z (Mac/PC)

The History Brush & Fill History

You can apply any History state to a specific area in two different ways. Firstly, you can select the History Brush tool from the tools panel, fig 9.5. You then select the History State that you wish to paint with, by clicking in the left hand box corresponding to that History states position in the History panel, fig 9.6. Adjust the brushes properties from the Option panel (fig 9.7) and paint on the document. It is best create a new blank layer at the top of the layer stack to paint the History state on. This way you will be working in a good non-destructive workflow and you can always discard the layer is you don't like the changes.



Fig 9.5 the History Brush tool – located in the Tools panel.

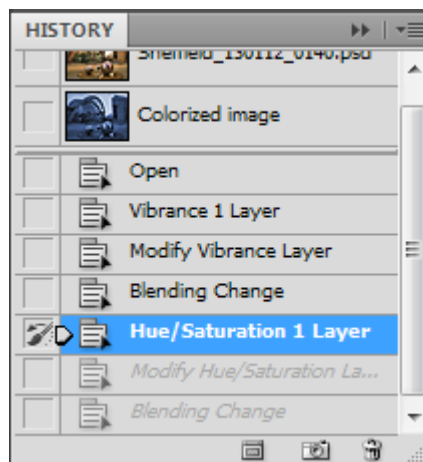


Fig 9.6 the History Brush icon appears when you click in the box to the left of the desired History state (in this case Hue/Saturation).

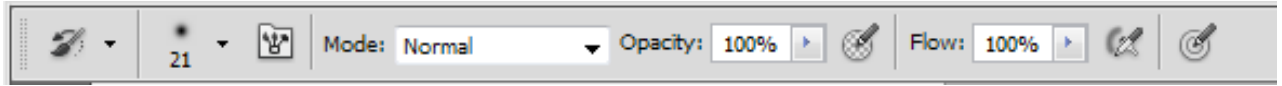


Fig 9.7 the Options panel associated with the History Brush Tool

Another way of applying a History state to a specific area is to make a selection using any of the methods described in Chapter 6. Click in the left hand box at the appropriate History State in the History panel. Create a new empty layer at the top of the Layer stack, go the Edit menu and choose Fill. In the dialogue box that appears (fig 9.8), use the drop down menu next to the word Use: to select History then click OK. The selection will be filled with selected History State, fig 9.9.

Please click the advert

Who is your target group? And how can we reach them?

At Bookboon, you can segment the exact right audience for your advertising campaign.

Our eBooks offer in-book advertising spot to reach the right candidate.



Contact us to hear more
kbm@bookboon.com



bp CREDIT SUISSE DAIMLER Unilever Microsoft **bookboon.com**

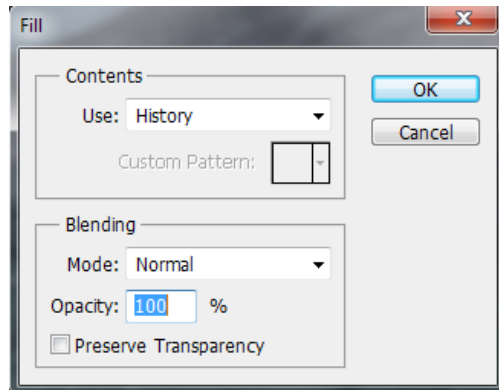


Fig 9.8 the Fill dialogue box.

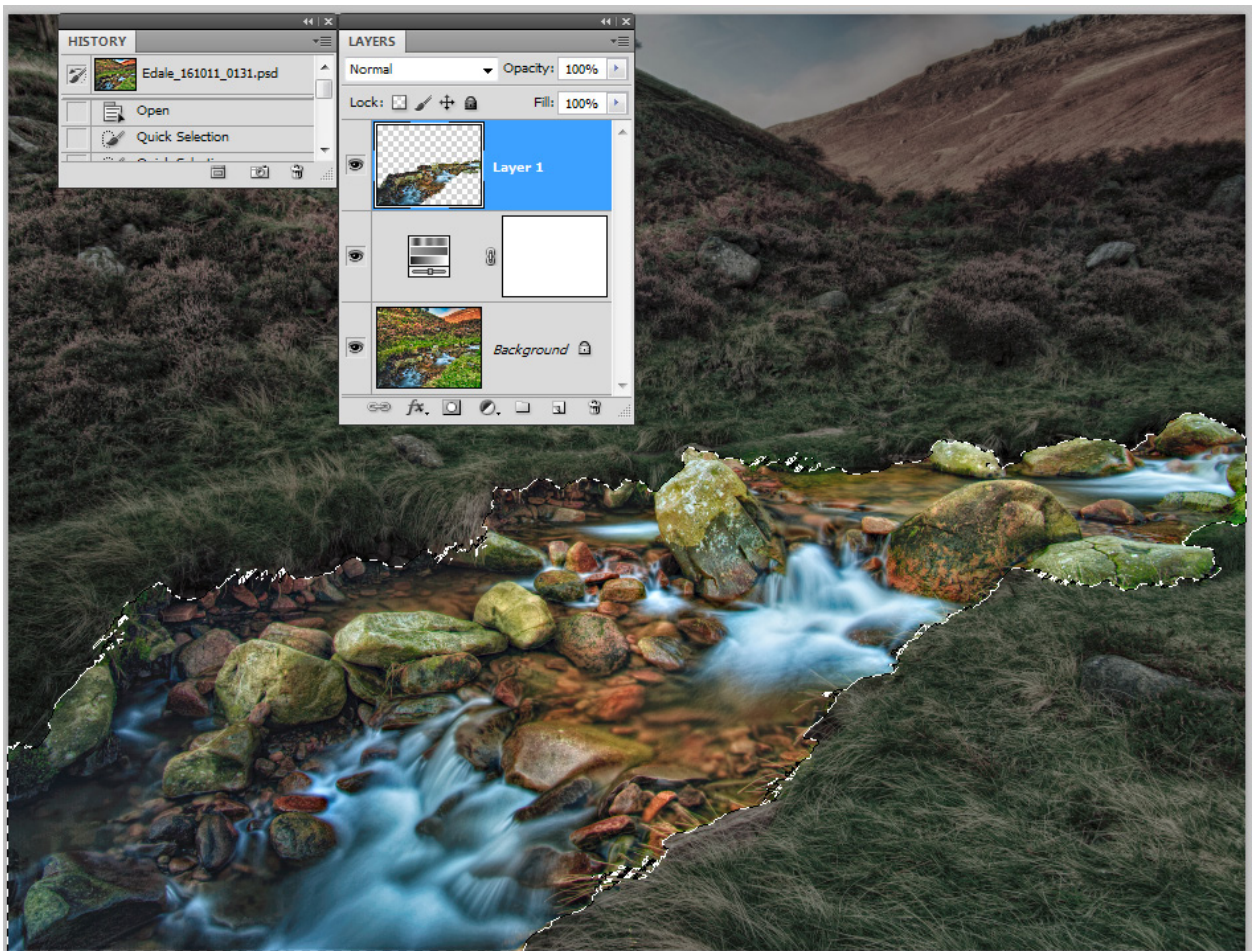


Fig 9.9 the selection has been filled with the Snapshot History State in a new layer

10 Cropping

There are two main ways in which we can crop a document in Photoshop. The first and most commonly used method, is to use the Crop tool, fig10.1.



Fig 10.1 the Crop tool – located in the Tools panel.

The Options panel that is associated with the Crop tool is unusual in that, before the crop area is drawn there are one set of options. After the crop area has been selected a second set of options will appear, fig 10.2.

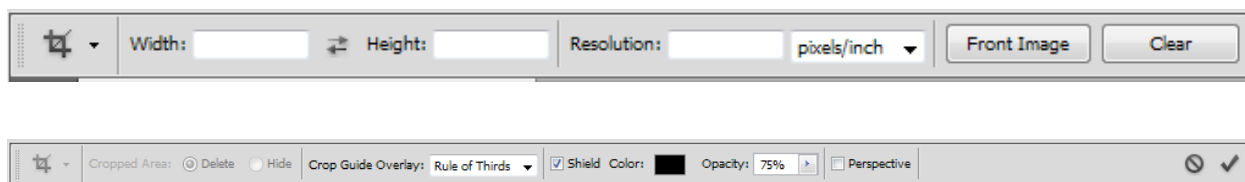


Fig 10.2 two sets of Crop option. The top one will appear before the crop is drawn. The lower set of options will appear after the Crop is drawn.

The first set of Crop tool options are to enter specific dimensions and resolution for the document. This is very useful if you need the document output to specific criteria, to fit a certain print size or if the image has to be placed inside a design or web page layout. The second set of options pertain to the shield that is drawn with the Crop tool and defines the crop area. You can change the colour and opacity of the shield and you can also use the small drop down menu to determine which type of grid overlay is visible, fig10.3.

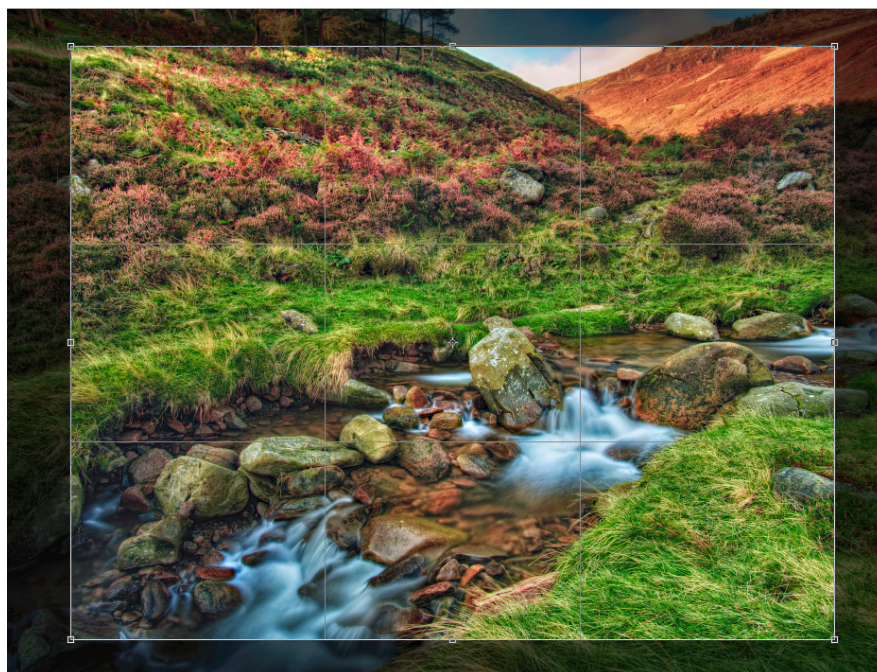


Fig 10.3 a cropped area, showing the shield and grid overlay

You are not restricted to the original crop boundaries. The edges of the crop area can be dragged until desired effect is achieved. Please note that if a specific size has been entered in the first Options panel, the aspect ratio of the crop cannot be changed. However, you can drag the corner points of the crop area to scale the crop area. The final document will then be interpolated to match the required output size. Once the final crop area has been decided upon, you must click on the Tick in the Options panel to accept the changes, fig 10.2.

Another way to crop an image is to use any of the selection techniques mentioned in Chapter 6 and make a selection. You may then go to the Image menu and choose Crop. The image will then be cropped to encompass the selected area.

Please click the advert



**THE BEST MASTER
IN THE NETHERLANDS**

**Master of Science
in Management***

www.nyenrode.nl

Source: 'Keuzegids Higher Education Masters 2011'.
*In category business administration and accountancy & controlling.

 **NYENRODE**
BUSINESS UNIVERSITEIT

11 Basic Printing

Printing is one of the areas of Photoshop that causes people problems. Typically, their prints don't look like the on-screen version of the document. You have to accept that your monitor and printer reproduce colours in very different ways and that they will never be completely identical in their output. Having said that, there are a number of things that we can do to help narrow the gap.

The very best method of getting a good print output that closely resemble the version you see on your monitor, is to buy (or borrow) a calibration device. There are many calibration devices on the market. However, the best ones enable you to calibrate both your monitor and printer so that their out matches as closely as possible. This kind of device will create custom "Profiles", which Photoshop can use to display and print you documents accurately.

A good calibration device can be expensive, so let's look at how we can be better results from Photoshop if we don't have access to one.

- Go your printer manufacturer website. Download and install the latest drivers for your printer.
- Make sure that you are viewing your monitor in a colour neutral environment. Colours that are around us strongly influence how we see colours on the screen. If you have strong colours in the room that you are working in, try working in the dark.
- Check your document for out of gamut colours – colours that your printer is unable to reproduce, such as strong, heavily saturated colours.
- If you are working with images, make sure that you adjust your image so that there is good detail in both the highlight and shadow areas.
- Let Photoshop handle the printing. Turn off your printers colour management options.
- If you are making high quality photo or fine art prints on high quality paper, check the manufacturer's website to see if they have produced a custom profile for the particular paper stock that you are using.

The Photoshop Print Dialogue Box

When you wish to make a print go to the File menu and choose the Print option, fig 11.1.

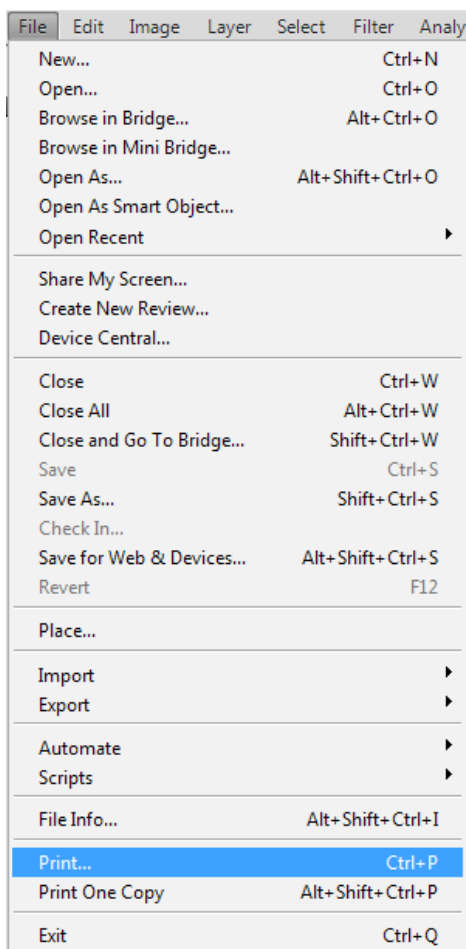


Fig 11.1 the Print option, found in the File menu.

Once the Print option is chosen, the Print Dialogue box will be displayed, as shown in fig 11.2.

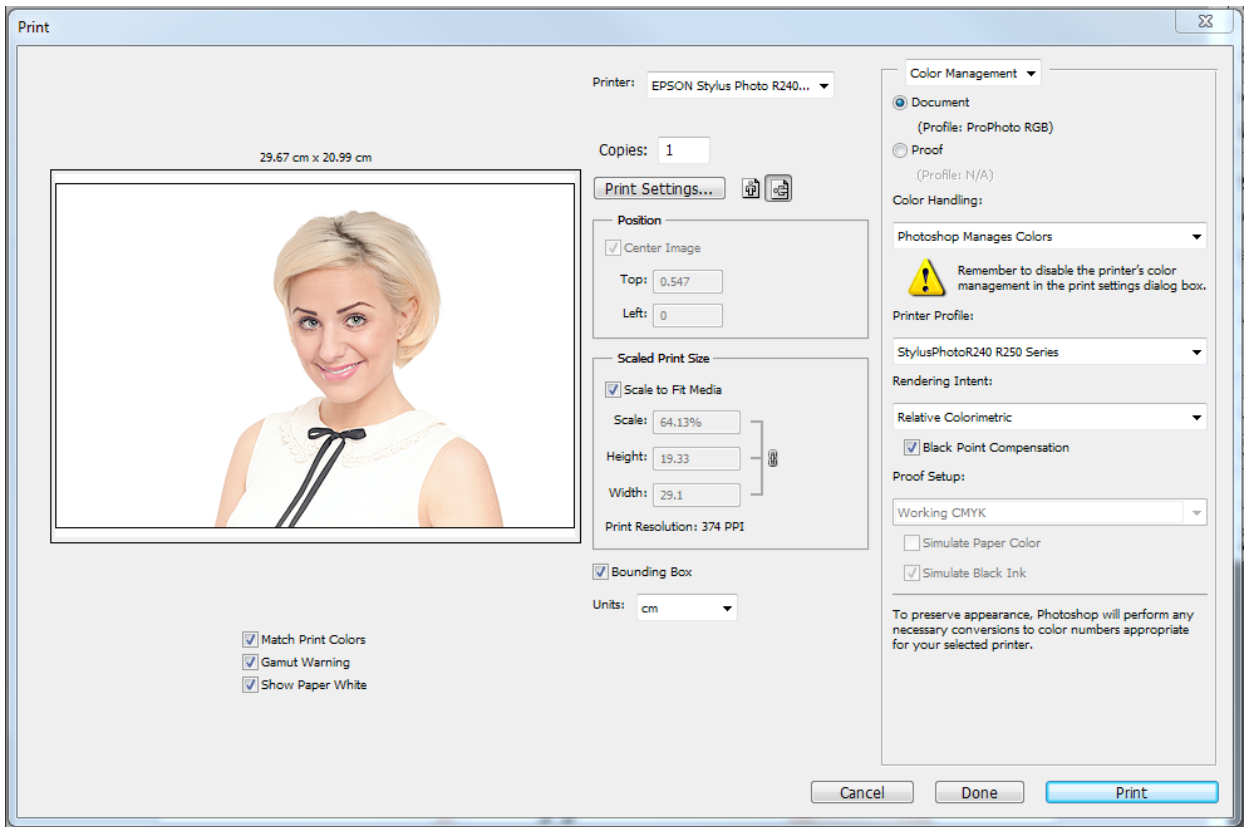


Fig 11.2 the Photoshop print dialogue box

Please click the advert

With us you can shape the future. Every single day.

For more information go to:
www.eon-career.com

Your energy shapes the future.



Make sure that the following settings are made:

- Select your printer from the drop down list at the top of the dialogue box.
- Set Photoshop Manages Colors from the Color Handling drop down list.
- In the Printer Profile section, have this set to either your printer or any custom that you may wish to use.
- For photographic documents, have the Rendering Intent drop down menu set to either Perceptual or Relative Colorimetric and make sure that the Black Point Compensation Check box is ticked.
- For documents containing graphics or charts, you may use any of the Rendering Intents, but you may be able to reproduce stronger colours if you use the Saturation option.
- Click on Print Settings to open up you printers settings (this will be different for every printer – refer to your user manual for how to make the required settings). Select the resolution, paper size and paper type that you wish to use. Find the Colour Management settings for your printer and turn them off, fig 11.3.

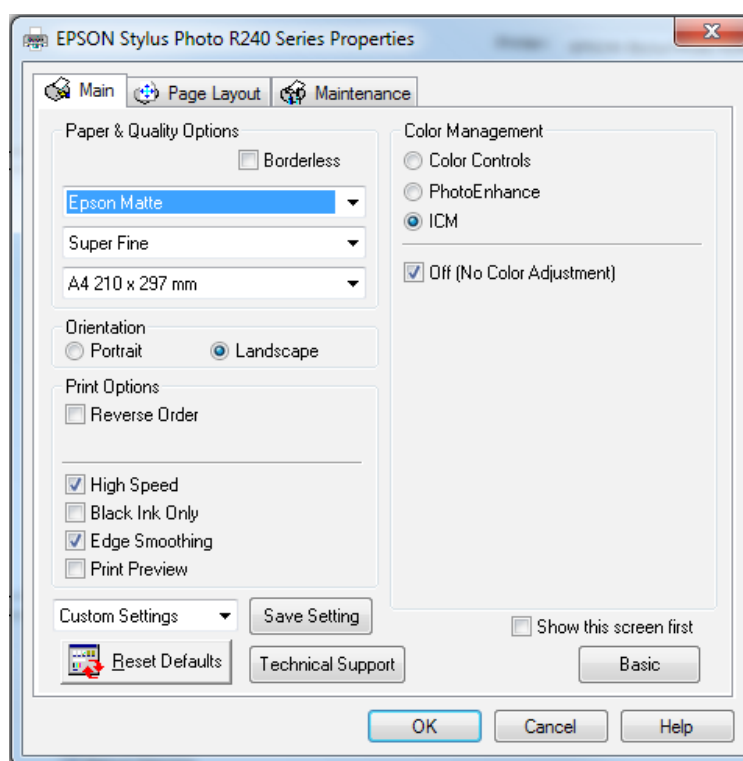


Fig 11.3 a typical Printer settings dialogue box. Turn off the printers colour management options.

If you want to produce a high quality print, it is often a good idea to use the “Scaled Print Size” option to make a smaller test print. Enter a percentage value in the Scale box (make sure that the Scale to Fit Media check box is unchecked or you will not be able to do this). This will save you ink in the long run, as you will probably have to make some adjustments to you document and make a few prints before you are happy with the results. Prints are almost always darker than their on screen versions, so it’s a good idea to make a Levels Adjustment Layer (see Chapter 4) and brighten the image slightly before you print. Once you have made a print that you are happy with, you can turn off or discard the Levels Adjustment Layer.